



YIWU ZIYANG IMPORT & EXPORT CO., LTD.

# PRODUCT CATALOG

FOR CUSTOMIZED PRODUCTS

2025 collection







# CONTENTS

COMPANY POLIFE	03
OUR CLIENTS	04
FAQ	05
HOW TO MAKE A CUSTOMIZED PROJECT	06
FABRIC INFORMATION	07
PRINTING SERVICES	09
ACCESSORIES INFORMATION	10
PRODUCT	16
CONTACT US	36



# COMPANY PROFILE

**10+ Years**

of working experience.

**300+ staff**

skilled and profesional

**900+ machines**

200+ Seamless machines  
300/400 cut and sewn

**500000+ monthly**

high yielding



# OUR CLIENTS

Our brand partnership network spans 67 countries worldwide, with solid business relationships established with over 310 clients.





# FAQ



## MOQ

For customized products, whether cut&sewn or seamless, the MOQ is 100 pieces per size per color.



## Payment Term

Once confirming the order, the customers need to pay 30% deposit. And pay the rest before delivering the goods



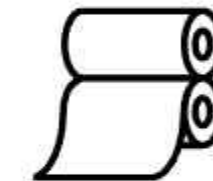
## Delivery Time

The Delivery time is 45-60 working days following final confirming the details.



## Transportation

For bulk shipments, you have the option to select between air or sea freight methods. And the freight forwarding method is generally specified by the customer as a priority.



## Accessories

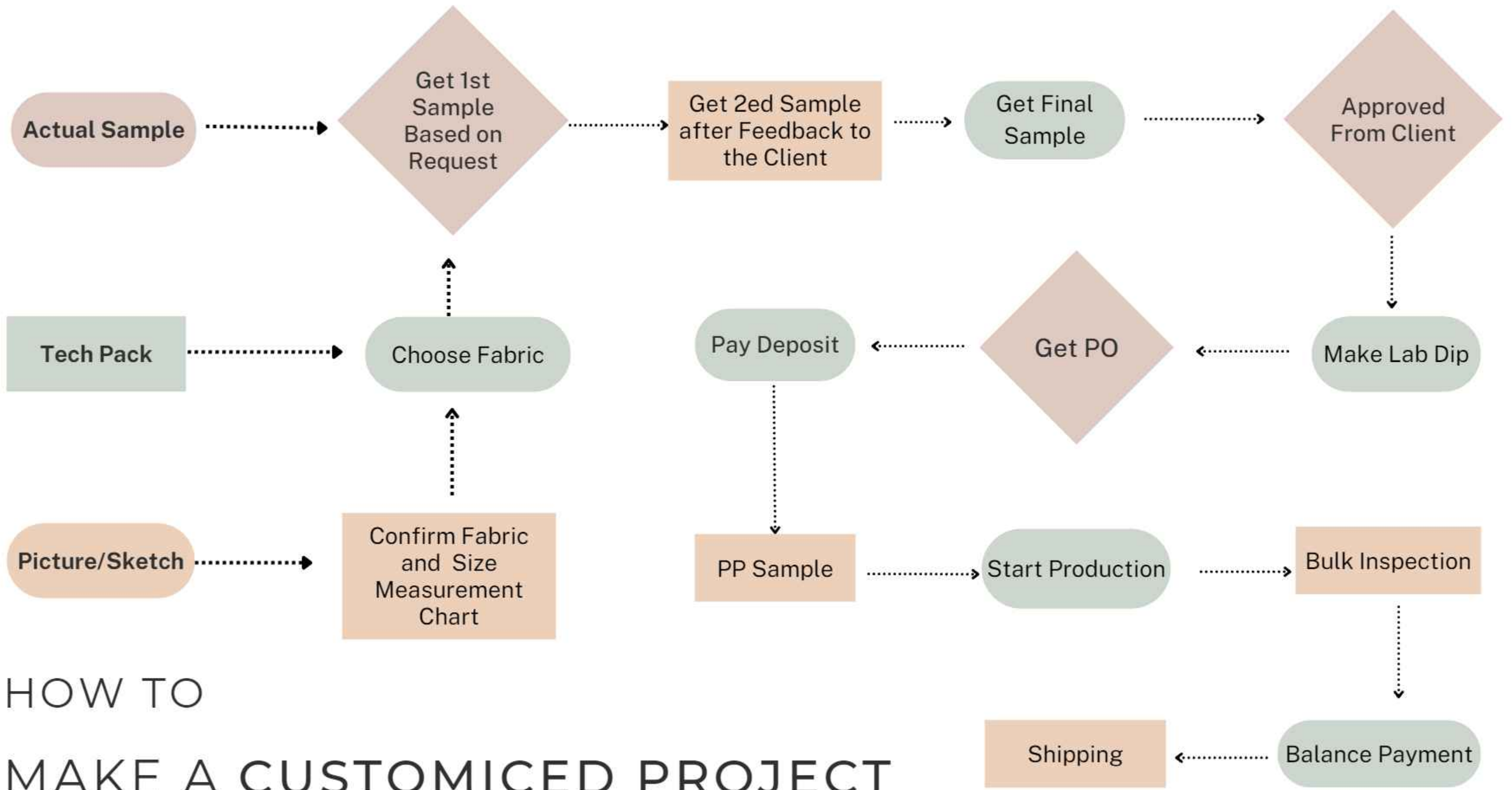
Accessories include packaging materials, logo materials, and hangtag materials, which we can customise according to your requests.



## Sampling

The lead time for single code, single color samples is 7-10 days. Sample cost is \$100, which includes the cost of the initial sample to the final sample and shipping.







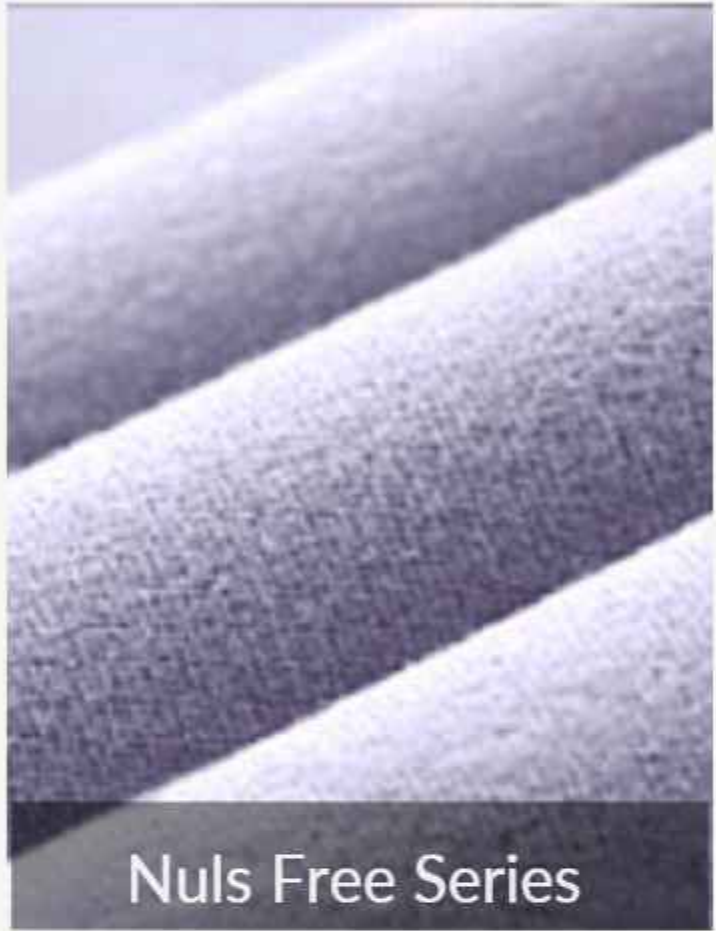
A close-up photograph of a hand with a silver ring on the ring finger, gently touching a piece of light-colored, textured fabric. The background is softly blurred, showing more fabric and a pair of scissors.

# FABRIC

We have extensive experience in developing nearly all types of fabrics, including recycled fibers such as nylon/spandex and polyester/spandex, as well as sustainable fibers like cotton, modal, Tencel, and merino wool. Additionally, we offer functional fibers such as antimicrobial, cooling, and floral finishes to meet your specific needs.







**Nuls Free Series**

**Composition: 80%Nylon+20%Lycra®fiber**  
**Gram weight: 195 G**

This fabric is renowned for its exceptional elasticity and durability, retaining its shape and softness even after machine washing. Our commitment to quality is demonstrated by rigorous testing, with the fabric passing the 2500-cycle wool felt pilling test at level 3.



**Nuls Serie**

**Composition: 80% Nylon 20% Spandex**  
**Gram weight: 220 G**

This material follows the same process as Lululemon's NULU series, lightweight and breathable, designed for ultimate comfort. It has undergone 2500 anti-pilling tests, achieving level 4, which surpasses Lululemon's level 3, ensuring unrestricted, free movement during use.



**Br Lycra™ Series**

**Composition: 70%Nylon+30%Lycra®fiber**  
**Gram weight: 210 G**

Our latest product features up to 30% Lycra Spandex, combining exceptional elasticity and comfort for a snug fit and excellent support. This fabric is especially suited for warm-up jogging and yoga activities.



**RIB™ Series**

**Composition:82%Nylon18%+Spandex**  
**Gram weight: 230 G**

Designed to effortlessly transition from everyday activities to your training sessions, The special texture sets it apart, ensuring that your sports moments are not only dynamic but also uniquely stylish.



# Printing Services



Regular Heat Transfer Labels

We offer a wide range of high-quality printing services to meet your various branding needs. Whether you're looking to enhance your product image or need cost-effective printing solutions, we provide the perfect solution for you. Custom logos can be tailored to your specific color and size preferences. For logos on custom sportswear, we offer the following options for you to choose from.



Silicone Heat Transfer Labels



Jacquard Labels



Woven Labels



Embroidered Labels Labels





# ACCESSORIES

Garment accessories are essential elements in the fashion world, serving both aesthetic and practical purposes. These items have the power to transform a simple piece of clothing into something stylish, functional, and unique. Whether you're looking to enhance the functionality or add decorative flair to your custom garments, the right accessories can make all the difference.



# Activewear accessories



**CHEST PAD**

Custom-made according to requirements, commonly including sponge, foam, silicone, and polyester fiber.



**DRAWSTRINGS**

Drawstrings can be made from various materials, such as cotton, polyester, or nylon, and can have different textures.



**BRA HOOKS**

Common types include single-hook, double-hook, and triple-hook designs, suitable for various bra styles.



**ZIPPERS**

Various types include invisible zippers, separating zippers, and double-slider zippers, each suited for different garment designs.



# Custom Packaging



## BIODEGRADABLE BAG

Custom-made according to requirements, commonly including sponge, foam, silicone, and polyester fiber.



## PLASTIC ZIP BAG

From PVC plastic, reusable and durable. Comes in 2 sizes with black or white zipper.



## COTTON MESH

Natural Cotton fabric, comes in drawstring and zipper closure style with 2 sizes available for both styles.



## HANG TAG

Material options include PVC and thick paper, as per customer requirements. Lamination options available are velvet, matte, glossy, and more.

# 2025 TRENDING STYLES







# BEST SELLERS





# CLASSIC STYLE





# SET 9-T

**Categories:** Top

**Stitching:** Seamless

**Material:** 90% Nylon and 10% spandex

**Size:** XS - XXL  
(specific size can be customised)

**Colour:**      
(specific colours can be customised)

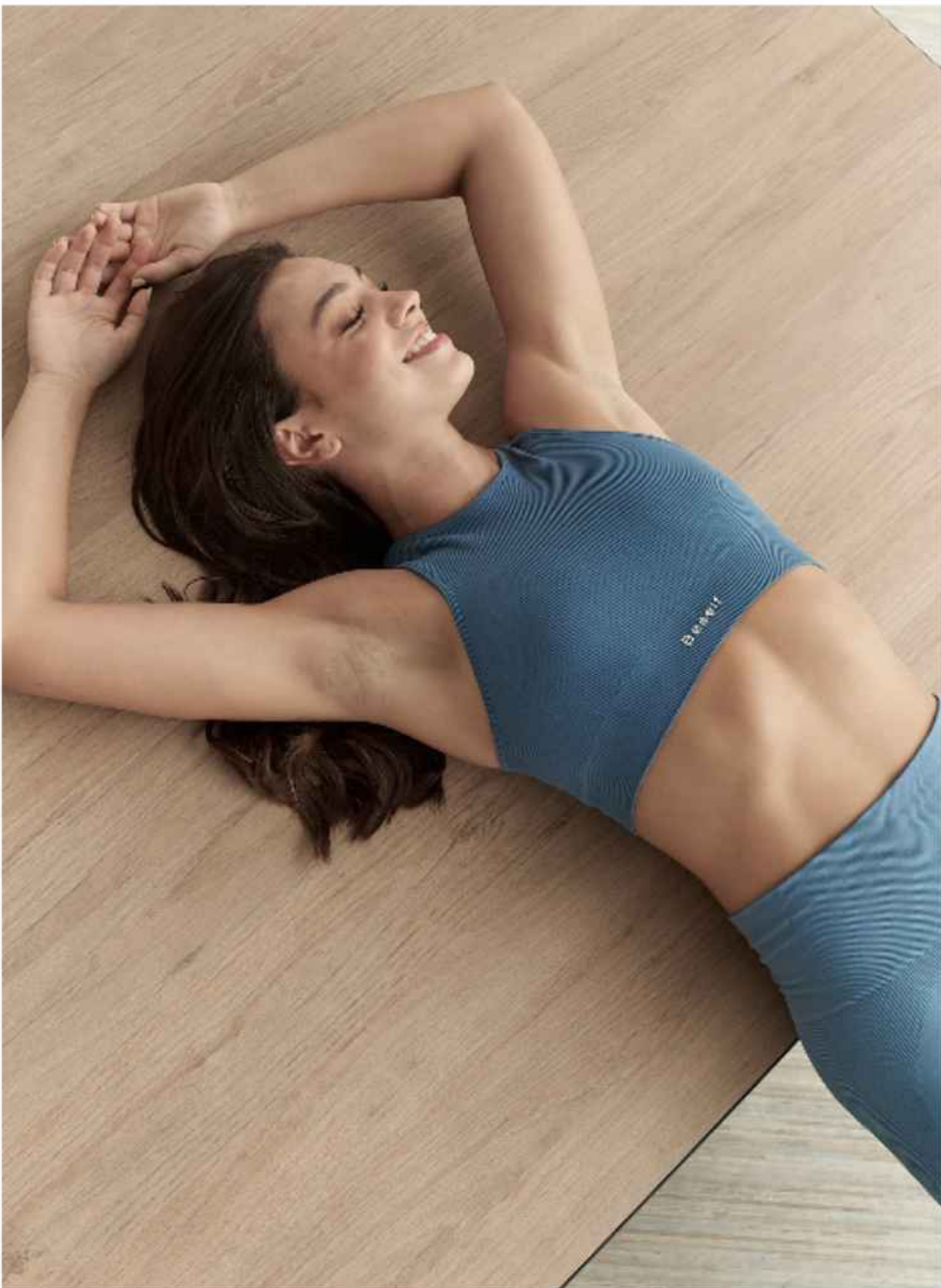
## Style Details:

- Moisture Wicking
- High Waist

SIZE	XS	S	M	L	XL	XXL
OVER BUST	30	31.5	33	34.5	36	38
WAIST	24	25.5	27	28.5	30	31.5
ACROSS SHOULDER	13.5	14	14.5	15	15.5	16
TORSO LENGTH	18.5	19	19.5	20	20.5	21

All measurements are in inches.





# SET42

**Categories:** Top

**Stitching:** Seamless

**Material:** 92% Nylon and 8% spandex

**Size:** XS - XL  
(specific size can be customised)

**Colour:**      
(specific colours can be customised)

## Style Details:

- Multimedia collage
- High Waist

SIZE	XS	S	M	L	XL	XXL
OVER BUST	30	31.5	33	34.5	36	38
WAIST	24	25.5	27	28.5	30	31.5
ACROSS SHOULDER	13.5	14	14.5	15	15.5	16
TORSO LENGTH	18.5	19	19.5	20	20.5	21

All measurements are in inches.





# SET 13-T

**Categories:** Jacket  
**Stitching:** Cut&sewn  
**Material:** 75%Nylon+25%spandex  
**Size:** XS - XXL  
 (specific size can be customised)  
**Colour:**     
 (specific colours can be customised)

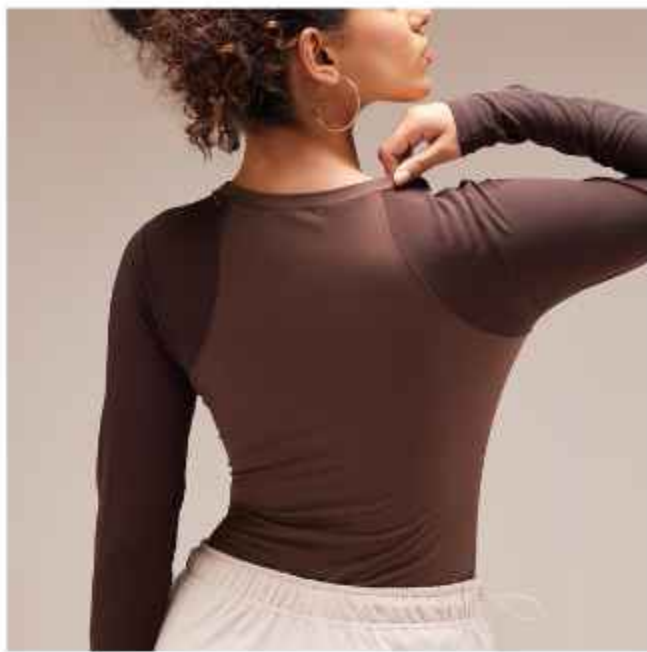
## Style Details:

- Curved Hem
- Half zip style

SIZE	XS	S	M	L	XL	XXL
OVER BUST	30	31.5	33	34.5	36	38
WAIST	24	25.5	27	28.5	30	31.5
ACROSS SHOULDER	13.5	14	14.5	15	15.5	16
TORSO LENGTH	18.5	19	19.5	20	20.5	21

All measurements are in inches.





# SET 11

**Categories:** Jumpsuit  
**Stitching:** Cut&sewn  
**Material:** 75%Nylon+25%spandex  
**Size:** XS - XXL  
 (specific size can be customised)  
**Colour:** ● ● ● ●  
 (specific colours can be customised)

**Style Details:**

- Raglan sheer sleeves
- Moisture-absorbing and quick-drying fabric

SIZE	XS	S	M	L	XL	XXL
OVER BUST	31.5	33	34.5	36	38	42
WAIST	25.5	27	28.5	30	31.5	33
ACROSS SHOULDER	14	14.5	15	15.5	16	16.5
TORSO LENGTH	19	19.5	20	20.5	21	21.5

All measurements are in inches.





# SAP-02

**Categories:** Jumpsuit  
**Stitching:** Seamless  
**Material:** 92%Nylon+8%spandex  
**Size:** XS - XL  
 (specific size can be customised)  
**Colour:** ● ● ●  
 (specific colours can be customised)

- Style Details:**
- Round neckline in the front and back
  - No padding

SIZE	XS	S	M	L	XL	XXL
OVER BUST	30	31.5	33	34.5	36	38
WAIST	24	25.5	27	28.5	30	31.5
ACROSS SHOULDER	13.5	14	14.5	15	15.5	16
TORSO LENGTH	18.5	19	19.5	20	20.5	21

All measurements are in inches.





# DS09

**Categories:** Jumpsuit  
**Stitching:** Cut&sewn  
**Material:** 92%Nylon+8%spandex  
**Size:** XS - XL  
(specific size can be customised)  
**Colour:**   
(specific colours can be customised)

## Style Details:

- Long collar jumpsuit with an open back
- Open cut on the sides (less coverage)

SIZE	XS	S	M	L	XL
BUST	29.9	32.6	35.4	38.1	40.9
WAIST	23.6	26.3	28.7	31.4	34.2
HIP	33	35.8	38.5	41.3	44

All measurements are in inches.





# AU-8449

- Categories:** Jumpsuit
- Stitching:** Cut&sewn
- Material:** 80%Nylon+20%spandex
- Size:** XS - L  
(specific size can be customised)
- Colour:** ● ●  
(specific colours can be customised)

## Style Details:

- Insulating material made from thin wool.
- Made from matte velvet fabric.



SIZE	XS	S	M	L
BUST	31-33	33-35.5	35.5-37.5	37.5-40
WHAIST	23-25	25-27.5	27.5-30	30-32
HIP	33-35.5	35.5-37.5	37.5-40	40-42.5

All measurements are in inches.





# JO5066

**Categories:** Bra

**Stitching:** Cut&sewn

**Material:** 77% Polyamide 23% Spandex

**Size:** XS - XL  
(specific size can be customised)

**Colour:** ● ●  
(specific colours can be customised)

## Style Details:

- supportive stretch and second-skin softness
- streamlined style features

SIZE	XS	S	M	L	XL
BUST	33	34.5	36	37.5	41
WAIST	24	25	27	29	32

All measurements are in inches.





# SET 4-T

**Categories:** Bra

**Stitching:** Cut&sewn

**Material:** 79%Nylon+21%spandex

**Size:** XS - XXL  
(specific colours can be customised)

**Colour:**      
(specific colours can be customised)

## Style Details:

- Soft straps eliminate irritation and tightness
- Moisture-wicking


SIZE	XS	S	M	L	XL	XXL
BUST	28	29	30	32	34	34
WAIST	31.5	33	34.5	36	38	42

All measurements are in inches.





# SET32

**Categories:** Bra  
**Stitching:** Seamless  
**Material:** 92% nylon+8% spandex  
**Size:** XS - XL  
(specific size can be customised)  
**Colour:**   
(specific colours can be customised)

## Style Details:

- Double lined
- Skinny straps with Y back neckline

SIZE	XS	S	M	L	XL
BUST	28	29	30	32	34
WAIST	31.5	33	34.5	36	38





# SET41

**Categories:** Bra  
**Stitching:** Seamless  
**Material:** 92% nylon+8% spandex  
**Size:** XS - XL  
(specific size can be customised)  
**Colour:** ● ●  
(specific colours can be customised)

## Style Details:

- Ribbed texture
- Double lined
- Cuts across chest

SIZE	XS	S	M	L	XL
BUST	28	29	30	32	34
WAIST	31.5	33	34.5	36	38





# SET 4-B

**Categories:** Leggings  
**Stitching:** Cut&sewn  
**Material:** 79%Nylon+21%spandex  
**Size:** XS - XXL  
 (specific colours can be customised)  
**Colour:**      
 (specific colours can be customised)

**Style Details:**

- Non-see through, layers perfectly
- Slim & contouring with subtle sheen

SIZE	XS	S	M	L	XL	XXL
WAIST	24-26	26-28	28-30	30-32	32-34	34-36
HIP	36	37	38	39	40.5	42
OUTSEAM LENGTH	41	41.5	42	42.5	43	43.5

All measurements are in inches.





# SET 7-B

**Categories:** Leggings  
**Stitching:** Cut&sewn  
**Material:** 75%Nylon+25%spandex  
**Size:** XS - XXL  
 (specific colours can be customised)  
**Colour:** 


  
 (specific colours can be customised)

## Style Details:

- Stretchy material for flexibility
- High waistband for comfort

SIZE	XS	S	M	L	XL	XXL
WAIST	24-26	26-28	28-30	30-32	32-34	34-36
HIP	36	37	38	39	40.5	42
OUTSEAM LENGTH	41	41.5	42	42.5	43	43.5

All measurements are in inches.





# SET 9

**Categories:** Leggings

**Stitching:** Seamless

**Material:** 90%nylon+10%spandex

**Size:** XS - XL  
(specific colours can be customised)

**Colour:**      
(specific colours can be customised)

- Style Details:**
- Comfortable and stretchy fit
  - High waistband

SIZE	XS	S	M	L	XL
WAIST	24	26	28	30	32
HIP	39	41	43	45	47
INSIDE LENGTH	29	30	30	31	31

All measurements are in inches.





# SET 9-B

**Categories:** Leggings

**Stitching:** Seamless

**Material:** 90%Nylon+10%spandex

**Size:** XS - XXL  
(specific colours can be customised)

**Colour:**      
(specific colours can be customised)

## Style Details:

- Sweat-wicking
- High-rise

SIZE	XS	S	M	L	XL	XXL
WAIST	24-26	26-28	28-30	30-32	32-34	34-36
HIP	36	37	38	39	40.5	42
OUTSEAM LENGTH	41	41.5	42	42.5	43	43.5

All measurements are in inches.





# SET 13-B

**Categories:** Joggers

**Stitching:** Cut&sewn

**Material:** 75%Nylon+25%spandex

**Size:** XS - XXL  
(specific colours can be customised)

**Colour:**     
(specific colours can be customised)

## Style Details:

- Soft waistband and high waist
- Bottom slit on the side

SIZE	XS	S	M	L	XL	XXL
WAIST	24-26	26-28	28-30	30-32	32-34	34-36
HIP	36	37	38	39	40.5	42
OUTSEAM LENGTH	41	41.5	42	42.5	43	43.5

All measurements are in inches.



# TZ6316-1 SHORTS

**Categories:** Shorts

**Stitching:** Seamless

**Material:** 90%nylon+10%spandex

**Size:** XS - XL  
(specific colours can be customised)

**Colour:** ● ● ● ● ● ●  
(specific colours can be customised)

- Style Details:**
- Highest compression, sculpting ribbed fabric
  - High rise

SIZE	XS	S	M	L	XL
WAIST	22-24	25-27	28-30	31-33	34-36
INSEAM LENGTH	22.5	22.9	23.3	23.7	24

All measurements are in inches.





# SET 8

**Categories:** Shorts

**Stitching:** Seamless

**Material:** 88%Nylon+12%spandex

**Size:** XS - XXL  
(specific colours can be customised)

**Colour:** ● ● ●  
(specific colours can be customised)

**Style Details:**

- The cinched waist and high-waisted design
- No Cameltoe

SIZE	XS	S	M	L	XL	XXL
<b>WAIST</b>	24-26	26-28	28-30	30-32	32-34	34-36
<b>HIP</b>	36	37	38	39	40.5	42
<b>OUTSEAM LENGTH</b>	41	41.5	42	42.5	43	43.5

All measurements are in inches.



# CSB280188

<b>Categories:</b>	Socks
<b>Stitching:</b>	Weave
<b>Material:</b>	80% polyester, 17% cotton, 3% spandex
<b>Size:</b>	O/S (specific colours can be customised)
<b>Colour:</b>	○ (specific colours can be customised)

## Style Details:

- Timeless, versatile
- one-size-fits-all





# CSB280387

**Categories:** sock

**Stitching:** Weave

**Material:** 80% Polyester+17% Cotton+3% Spandex

**Size:** O/S  
(specific colours can be customised)

**Colour:**   
(specific colours can be customised)

## Style Details:

- Contrast frill detail at cuff
- Made in our Polyester/Cotton/Spandex blend



YIWU ZIYANG IMPORT & EXPORT CO., LTD.

# PRODUCT CATALOG

FOR IN-STOCK PRODUCTS







# LEGGINGS



# 41037

**Price:** \$ 9.40

**Stitching:** Cut&sewn

**Material:** 82% Nylon + 18% Spandex

**Size:** S - XL

**Colour:**

### Style Details:

- Breathable fabric
- Flared design for a flattering, slimming look.

SIZE	S	M	L	XL
1/2TOP WAIST	9.7	10.6	11.6	12.6
1/2HIP	13.4	14.4	15.4	16.4
WAIST HEIGHT	4.3	4.3	4.3	4.3
OUTSEAM LENGTH	39	39.4	39.8	40.2

All measurements are in inches.





# 1247

Price:

\$ 8.50

Stitching:

Cut&sewn

Material:

80% Nylon + 20% Spandex

Size:

S - XL

Colour:



Style Details:

- High-performance support
- No restrictive feel

SIZE	S	M	L	XL
1/2TOP WAIST	8.9	9.7	10.4	11.2
1/2HIP	12.2	13.0	13.8	14.6
OUTSEAM LENGTH	33.9	34.5	35	35.7

All measurements are in inches.



# 90237

**Price:** \$ 14.50

**Stitching:** Cut&sewn

**Material:** 80% Nylon + 20% Spandex

**Size:** XS - 3XL

**Colour:**

### Style Details:

- Elastic high-rise waist
- Dual side pockets for convenience

SIZE	XS	S	M	L	XL	XXL	XXXL
1/2TOP WAIST	12.2	13.0	13.8	14.6	15.4	16.2	16.9
1/2HIP	17.6	18.4	19.1	19.9	20.7	21.5	22.3
OUTSEAM LENGTH	37.8	38.6	39.4	40.2	41	41.8	42.6

All measurements are in inches.





紫色灰 PURPLE GREY 蜜蜂黄 BEE YELLOW 野莓色 WILD BERRY COLOR 烟黄玉 SMOKE YELLOW



红色 RED 茄青蓝 SPINACH 可可色 COCOA 卷云蓝 RINGULINE



粉红荔枝 PINK LITCHI 粉橘色 PINK ORANGE 海军蓝 NAVY 黑色 BLACK



芭比粉 BARBIE PINK 茶棕 TEA BROWN 湖青色 LAKE BLUE 白蛋白 ALBUMIN



浅粉 LIGHT PINK 青柠 LIME 板栗色 CHESTNUT COLOR 爱马仕橙 HENRI



森林绿 FOREST GREEN 慕色玫瑰 MUSE ROSE 抹茶绿 MATCHA GREEN 石墨灰 GRAPHITE GREY



深卡其 DEEP KHAKI 深玉色 DEEP JADE 深紫色 DEEP PURPLE 珊瑚红 CORAL



犀牛灰 RHINO GREY 丝绒粉 VELVET PINK 初叶黄 BUD YELLOW

# 1237

Price: \$ 8.80

Stitching: Cut&sewn

Material: 80% Nylon + 20% Spandex

Size: S - XL



- Style Details:
- No awkward crotch area
  - Tummy and butt lifting design

SIZE	S	M	L	XL
1/2TOP WAIST	9.5	10.4	11.4	12.4
1/2HIP	13.0	14.0	15.0	16.0
OUTSEAM LENGTH	32.7	33.3	33.9	34.5

All measurements are in inches.





# 1507

**Price:** \$ 9.40

**Stitching:** Cut&sewn

**Material:** 80% Nylon + 20% Spandex

**Size:** F

**Colour:**

### Style Details:

- Free-cut ankle design
- Universal fit for every body shape

SIZE	1/2TOP WAIST	1/2HIP	WAIST HEIGHT	OUTSEAM LENGTH
F	10	13.6	3.6	31.7

All measurements are in inches.





# 41008

**Price:** \$ 8.80

**Stitching:** Cut&sewn

**Material:** 80% Nylon + 20% Spandex

**Size:** S - XL

**Colour:** 

- Style Details:**
- Moisture-wicking fabric
  - Long-lasting antibacterial protection

SIZE	S	M	L	XL
1/2TOP WAIST	11.2	12.2	13.2	14.2
1/2HIP	13.0	14.0	15.0	16.0
WAIST HEIGHT	4.3	4.3	4.3	4.3
OUTSEAM LENGTH	31.5	32	32.5	33

All measurements are in inches.



# CK1611

**Price:** \$ 8.80

**Stitching:** Cut&sewn

**Material:** 80% Nylon + 20% Spandex

**Size:** S - XL

**Colour:**

### Style Details:

- Thickened fleece with a naked sensation fabric
- High-stretch waistband for a slim, toned waist

SIZE	S	M	L	XL
1/2TOP WAIST	9.9	10.8	11.8	12.8
1/2HIP	13.0	14.0	15.0	16.0
WAIST HEIGHT	4.1	4.1	4.1	4.1
OUTSEAM LENGTH	33.1	33.5	33.9	34.3

All measurements are in inches.





# 90155CK

**Price:** \$ 11.50

**Stitching:** Cut&sewn

**Material:** 80% Nylon + 20% Spandex

**Size:** S - XL

**Colour:**

- Style Details:**
- Superior fabric with excellent elasticity
  - Elastic drawstring for customizable comfort

SIZE	S	M	L	XL	XXL
1/2TOP WAIST	11.8	12.6	13.4	14.2	15.0
1/2HIP	15.8	16.5	17.3	18.1	18.9
LEG OPENING	9.9	10.2	10.6	11.5	11.4
OUTSEAM LENGTH	39	39.4	39.8	40.2	40.6

All measurements are in inches.



# CK1583

**Price:** \$ 6.60

**Stitching:** Cut&sewn

**Material:** 82% Nylon + 18% Spandex

**Size:** S - XL

**Colour:**

### Style Details:

- 7A Grade Antibacterial Leggings
- Invisible line design for ultimate comfort and confidence

SIZE	S	M	L	XL
1/2TOP WAIST	9.3	10.2	11.2	12.2
1/2HIP	12.4	13.4	14.4	15.4
WAIST HEIGHT	4.1	4.1	4.1	4.1
OUTSEAM LENGTH	32.5	32.9	33.3	33.7

All measurements are in inches.





# CK1264

Price:

\$ 8.60

Stitching:

Cut&sewn

Material:

80% Nylon + 20% Spandex

Size:

S - XL

Colour:



Style Details:

- Three-dimensional tailored fit
- High-stretch, skin-friendly fabric

SIZE	S	M	L	XL
1/2TOP WAIST	11	12	13	14
1/2HIP	13	14	15	16
OUTSEAM LENGTH	32.5	32.9	33.3	33.7

All measurements are in inches.



# CK41006

**Price:** \$ 11.20

**Stitching:** Cut&sewn

**Material:** 80% Nylon + 20% Spandex

**Size:** F

**Colour:** 

**Style Details:**

- Washable Without Losing Shape
- High-rise Design With Tummy Control, No Slipping

SIZE	1/2TOP WAIST	1/2HIP	WAIST HEIGHT	OUTSEAM LENGTH
F	9.9	13.6	4.3	40.4

All measurements are in inches.





# CK1317

**Price:** \$ 9.20

**Stitching:** Cut&sewn

**Material:** 80% Nylon + 20% Spandex

**Size:** S - XL

**Colour:**

**Style Details:**

- Ultra-High Stretchability
- Seamless Ankle Design for Enhanced Comfort

SIZE	S	M	L	XL
1/2TOP WAIST	10.6	11.6	12.6	13.6
1/2HIP	13.8	14.8	15.8	16.8
OUTSEAM LENGTH	33.1	33.5	33.9	34.3

All measurements are in inches.



# CK1519

Price: **\$ 10.00**

Stitching: Cut&sewn

Material: 80% Nylon + 20% Spandex

Size: S - XL

Colour:

### Style Details:

- Comfortable, Non-Slip Waistband Design
- Breathable integrated fixed padding

SIZE	S	M	L	XL
1/2TOP WAIST	9.6	10.6	11.6	12.6
1/2HIP	12.6	13.6	14.6	15.6
WAIST HEIGHT	4.1	4.1	4.1	4.1
OUTSEAM LENGTH	31.1	31.5	31.9	32.3

All measurements are in inches.





# CK1524

Price: \$ 11.30

Stitching: Cut&sewn

Material: 80% Nylon + 20% Spandex

Size: F

Colour:

### Style Details:

- Flared Leg Design for a Lengthening Effect
- One Size Fits All Body Types

SIZE	1/2TOP WAIST	1/2HIP	WAIST HEIGHT	OUTSEAM LENGTH
F	9.9	13.6	4.3	39.4

All measurements are in inches.



# CK1527

Price: \$ 12.20

Stitching: Cut&sewn

Material: 80% Nylon + 20% Spandex

Size: S - XL

Colour:

### Style Details:

- Oversized Pocket Design
- No-Roll Waistband Design

SIZE	S	M	L	XL
1/2TOP WAIST	10.6	11.6	12.6	13.6
1/2HIP	19.3	20.3	21.3	22.3
WAIST HEIGHT	4.1	4.1	4.1	4.1
OUTSEAM LENGTH (Extended Version)	40.6	41	41.4	41.8
OUTSEAM LENGTH	38.6	39	39.4	39.4

All measurements are in inches.







# JYMA001

**Price:** \$ 4.40

**Stitching:** Cut&sewn

**Material:** 87% Nylon + 13% Spandex

**Size:** S - XXL

**Colour:**

### Style Details:

- Distinctive and Eye-catching Color-block Design
- Breathable and Quick-Dry Fabric



SIZE	S	M	L	XL	XXL
1/2 CHEST	10.2	11	11.8	12.6	13.4
1/2 HIP	13.4	14.2	15	15.8	16.5
FRONT LENGTH	30.7	31.5	32.3	33.1	33.9

All measurements are in inches.





# JYMK033

**Price:** \$ 5.60

**Stitching:** Cut&sewn

**Material:** 87% Nylon + 13% Spandex

**Size:** S - XXL

**Colour:** 

### Style Details:

- Unique Faux Two-Piece Design
- High Waistline for a Perfectly Sculpted Silhouette

SIZE	S	M	L	XL	XXL
1/2 CHEST	10.2	11	11.8	12.6	13.4
1/2 HIP	13	13.8	14.6	15.4	16.2
FRONT LENGTH	32.3	33.1	33.9	34.3	34.7

All measurements are in inches.





# MT20

**Price:** \$ 2.60

**Stitching:** Cut&sewn

**Material:** 87% Nylon + 13% Spandex

**Size:** S - XXL

**Colour:**

### Style Details:

- Breathable Fabric for a Cool and Comfortable Fit
- Body-Shaping Design to Tuck in the Waist and Flatten the Tummy

SIZE	S	M	L	XL	XXL
1/2 CHEST	11	11.8	12.6	13.4	14.2
1/2 HIP	13.4	14.2	15	15.8	16.6
FRONT LENGTH	32.7	33.5	34.3	35.1	35.9

All measurements are in inches.





# MT21

**Price:** \$ 2.6

**Stitching:** Cut&sewn

**Material:** 87% Nylon + 13% Spandex

**Size:** S - XXL

**Colour:**

- Style Details:**
- Lift and Sculpt the Leg Muscles
  - Feather-Light, Skin-Friendly Fit for Unrestricted Movement

SIZE	S	M	L	XL	XXL
1/2 CHEST	11	11.8	12.6	13.4	14.2
1/2 HIP	13.4	14.2	15	15.8	16.6
FRONT LENGTH	32.7	33.5	34.3	35.1	35.9

All measurements are in inches.





# MTWXTK04

**Price:** \$ 4.40

**Stitching:** Cut&sewn

**Material:** 87% Nylon + 13% Spandex

**Size:** S - XXL

**Colour:**

### Style Details:

- High-Stretch, Bare-Skin Fabric
- High-Waisted Design for Tummy Control and a Slimming Effect

SIZE	S	M	L	XL	XXL
1/2 CHEST	11	11.8	12.6	13.4	14.2
1/2 HIP	13.2	14	14.8	15.6	16.4
FRONT LENGTH	30.7	31.5	32.3	33.1	33.9

All measurements are in inches.





# MTCKW

**Price:** \$ 4.80

**Stitching:** Cut&sewn

**Material:** 87% Nylon + 13% Spandex

**Size:** S - XXL

**Colour:**

### Style Details:

- Mesh Panel Construction with Breathable Fabric
- High-Waisted Design for a Sleek, Tummy-Tucking Fit

SIZE	S	M	L	XL	XXL
1/2 CHEST	10.8	11.6	12.4	13.2	14
1/2 HIP	13.2	14	14.8	15.6	16.4
FRONT LENGTH	31.1	31.9	32.7	33.5	34.3

All measurements are in inches.





# MTCK90

**Price:** \$ 3.80

**Stitching:** Cut&sewn

**Material:** 87% Nylon + 13% Spandex

**Size:** S - XXL

**Colour:**

### Style Details:

- Lift and Shape the Hips for a Sculpted Look
- Invisible Pocket Design for a Sleek, Streamlined Look



SIZE	S	M	L	XL	XXL
1/2 CHEST	10.8	11.6	12.4	13.2	14
1/2 HIP	13	13.8	14.6	15.4	16.2
FRONT LENGTH	32.3	32.7	33.1	33.5	33.9

All measurements are in inches.





# JYMK025

**Price:** \$ 4.40

**Stitching:** Cut&sewn

**Material:** 87% Nylon + 13% Spandex

**Size:** S - XXL

**Colour:** 

## Style Details:

- Bell-Bottom Cut for a Leg-Lengthening, Shaping Effect
- Breathable and Moisture-Wicking for a Soft, Smooth Feel

SIZE	S	M	L	XL	XXL
1/2 CHEST	11	11.8	12.6	13.4	14.2
1/2 HIP	14.2	15	15.8	16.6	17.4
FRONT LENGTH	36.2	37	37.8	38.6	39.4

All measurements are in inches.



# MTJCK02

Price:

\$ 5.20

Stitching:

Cut&sewn

Material:

76% Nylon + 24% Spandex

Size:

S - XXL

Colour:



Style Details:

- Side Pockets for Convenient Storage
- Flawless Seamless Fit with a Butt-Lifting Effect

SIZE	S	M	L	XL	XXL
1/2 CHEST	11	11.8	12.6	13.4	14.2
1/2 HIP	14.2	15	15.8	16.6	17.4
FRONT LENGTH	30.7	31.5	32.3	33.1	33.9

All measurements are in inches.





# MTJCK01

**Price:** \$ 4.70

**Stitching:** Cut&sewn

**Material:** 76% Nylon + 24% Spandex

**Size:** S - XXL

**Colour:**

### Style Details:

- One-Piece Design for a Smooth, Uninterrupted Fit
- Stretch High Waist for a Flattering, Waist-Cinching Fit

SIZE	S	M	L	XL	XXL
1/2 CHEST	11	11.8	12.6	13.4	14.2
1/2 HIP	12.6	13.4	14.2	15	15.8
FRONT LENGTH	31.7	32.5	33.3	34.1	34.9

All measurements are in inches.



# MTJCK03

**Price:** \$ 4.70

**Stitching:** Cut&sewn

**Material:** 76% Nylon + 24% Spandex

**Size:** S - XXL

**Colour:** 

### Style Details:

- 3D Contour Cutting Technology for a Peach-Perfect Lift
- No Seams in the Crotch Area for Unrestricted, Confident Movement

SIZE	S	M	L	XL	XXL
1/2 CHEST	10.6	11.4	12.2	13	13.8
1/2 HIP	13	13.8	14.6	15.4	16.2
FRONT LENGTH	31.3	32.1	32.9	33.7	34.5

All measurements are in inches.





# CK381

Price:

\$ 8.50

Stitching:

Cut&sewn

Material:

80%nylon+20%spandex

Size:

S - XL

Colour:



Style Details:

- Soft and skin-friendly
- designed to enhance your natural shape

SIZE	S	M	L	XL
1/2TOP WAIST	11.0	11.8	12.6	13.4
1/2HIP	14.6	15.4	16.2	16.9
OUTSEAM LENGTH	37.4	38.0	38.6	39.2

All measurements are in inches.



# CK709

Price: \$ 8.2

Stitching: Cut&sewn

Material: 75%nylon+25%spandex

Size: S - XL

Colour: 

### Style Details:

- Shapes the legs
- stays perfectly in place

SIZE	S	M	L	XL
1/2TOP WAIST	9.9	10.6	11.4	12.2
1/2HIP	14.2	15.0	15.8	16.5
OUTSEAM LENGTH	33.5	34.3	35.1	35.9

All measurements are in inches.





# CK2083

**Price:** \$ 8.2

**Stitching:** Cut&sewn

**Material:** 80%nylon+20%spandex

**Size:** S - XL

**Colour:**

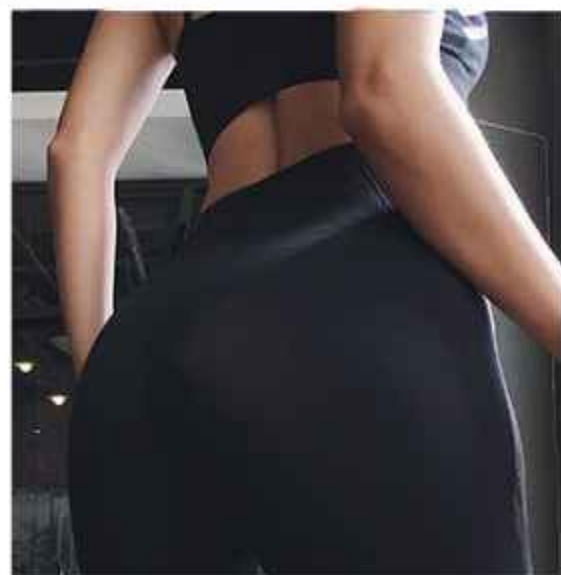
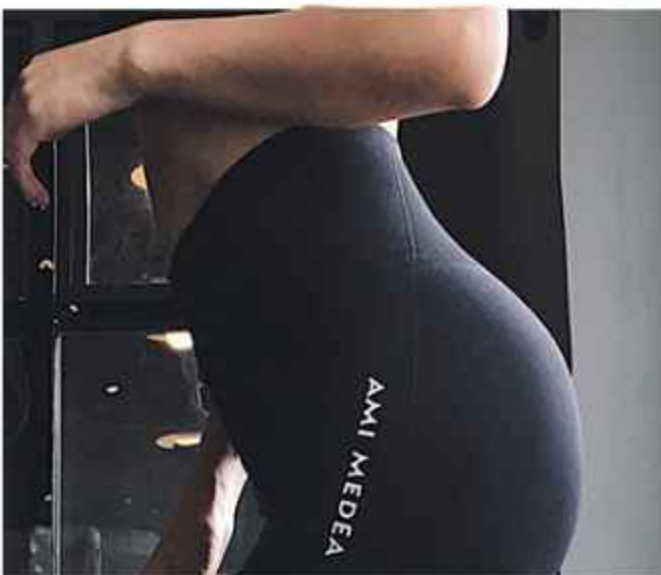
**Style Details:**

- 3D Contour Cutting Technology for a Peach-Perfect Lift
- No Seams in the Crotch Area for Unrestricted, Confident Movement

SIZE	S	M	L	XL
<b>1/2TOP WAIST</b>	9.5	10.2	11.0	11.8
<b>1/2HIP</b>	12.4	13.2	14.0	14.8
<b>OUTSEAM LENGTH</b>	32.9	33.3	33.7	34.1

All measurements are in inches.





# 9K024

Price: \$ 4.70

Stitching: Seamless

Material: 90% Nylon + 10% Spandex

Size: S - L

Colour:  

## Style Details:

- Extended High Waist for a Snug, Yet Unrestrictive Fit
- Reflective Letter Design on the Thigh for a Distinctive, Sporty Edge

SIZE	S	M	L
1/2TOP WAIST	11-14.6	11.8-15.4	12.6-16.2
1/2HIP	14.2	15	15.8
OUTSEAM LENGTH	31.5	31.9	32.3

All measurements are in inches.





# 9K024涂鸦印花

Price: \$ 6.30

Stitching: Seamless

Material: 90% Nylon + 10% Spandex

Size: S - L

Colour:



Style Details:

- Cool Graffiti Letter Print for a Trendy, Statement Style
- Tummy and butt lifting design

SIZE	S	M	L
1/2TOP WAIST	11.4	12.2	13
1/2HIP	12.4	13.2	14
LEG OPENING	7.1	7.6	8.1
OUTSEAM LENGTH	31.5	32.3	33.1

All measurements are in inches.





# 9K029

**Price:** \$ 4.50

**Stitching:** Seamless

**Material:** 90% Nylon + 10% Spandex

**Size:** S - L

**Colour:** 

### Style Details:

- Wide Waistband for Enhanced Tummy Control and Smooth Fit
- High-Density, Firm Fit with Superior Stretch

SIZE	S	M	L
1/2TOP WAIST	11.2	12.0	12.8
1/2HIP	14.6	15.4	16.2
OUTSEAM LENGTH	33.1	33.9	34.7

All measurements are in inches.





# 9K125

**Price:** \$ 4.70

**Stitching:** Seamless

**Material:** 76% Nylon +Polyester14%+ 10% Spandex

**Size:** S - L

**Colour:**

### Style Details:

- Quick-Dry Fabric for Enhanced Comfort
- High-Rise Fit with a Butt-Lifting Design

SIZE	S	M	L
1/2TOP WAIST	12.6	13.4	14.2
1/2HIP	15	15.8	16.6
WAIST HEIGHT	4	4	4
OUTSEAM LENGTH	30.3	30.7	31.3

All measurements are in inches.





# 9K241

Price: \$ 4.70

Stitching: Seamless

Material: 90% Nylon + 10% Spandex

Size: S - L

Colour:

- Style Details:
- Breathable, Sweat-Wicking Fabric to Keep You Dry
  - High-Waisted, Elastic Tummy-Control for a Sculpted Fit

SIZE	S	M	L
1/2TOP WAIST	11.8	12.6	13.4
1/2HIP	14.6	15.4	16.2
LEG OPENING	8.3	8.8	9.2
OUTSEAM LENGTH	31.1	31.9	32.7

All measurements are in inches.






# 9K244

**Price:** \$ 4.70

**Stitching:** Seamless

**Material:** 90% Nylon + 10% Spandex

**Size:** S - L

**Colour:**   

### Style Details:

- Quick-Drying and Breathable for Maximum Comfort
- High-Waisted, Slim-Fit Design for a Sculpted Silhouette

SIZE	S	M	L
1/2TOP WAIST	11.4	12.2	13
1/2HIP	14.6	15.4	16.2
LEG OPENING	8.3	8.8	9.2
OUTSEAM LENGTH	31.9	32.7	33.5

All measurements are in inches.



# 9K327

**Price:** \$ 6.00

**Stitching:** Seamless

**Material:** 90% Nylon + 10% Spandex

**Size:** S - L

**Colour:** 

### Style Details:

- Exclusive Ombre Tie-Dye Design for a Distinctive Style
- Moisture-Wicking and Breathable for All-Day Freshness

SIZE	S	M	L
1/2TOP WAIST	11.8	12.6	13.4
1/2HIP	13.8	14.6	15.4
LEG OPENING	8.3	8.8	9.2
OUTSEAM LENGTH	31.9	32.7	33.5

All measurements are in inches.





# 9K375

**Price:** \$ 5.70

**Stitching:** Seamless

**Material:** 90% Nylon + 10% Spandex

**Size:** S - L

**Colour:** 

### Style Details:

- Exclusive Ombre Tie-Dye Design for a Distinctive Style
- Comfortable and Anti-cellulite Properties  
Free to Stretch

SIZE	S	M	L
1/2TOP WAIST	11.0	11.8	12.6
1/2HIP	14.2	15.0	15.8
LEG OPENING	7.5	8.0	8.4
OUTSEAM LENGTH	31.1	31.9	32.7

All measurements are in inches.





# 9K425

Price: \$ 4.40

Stitching: Seamless

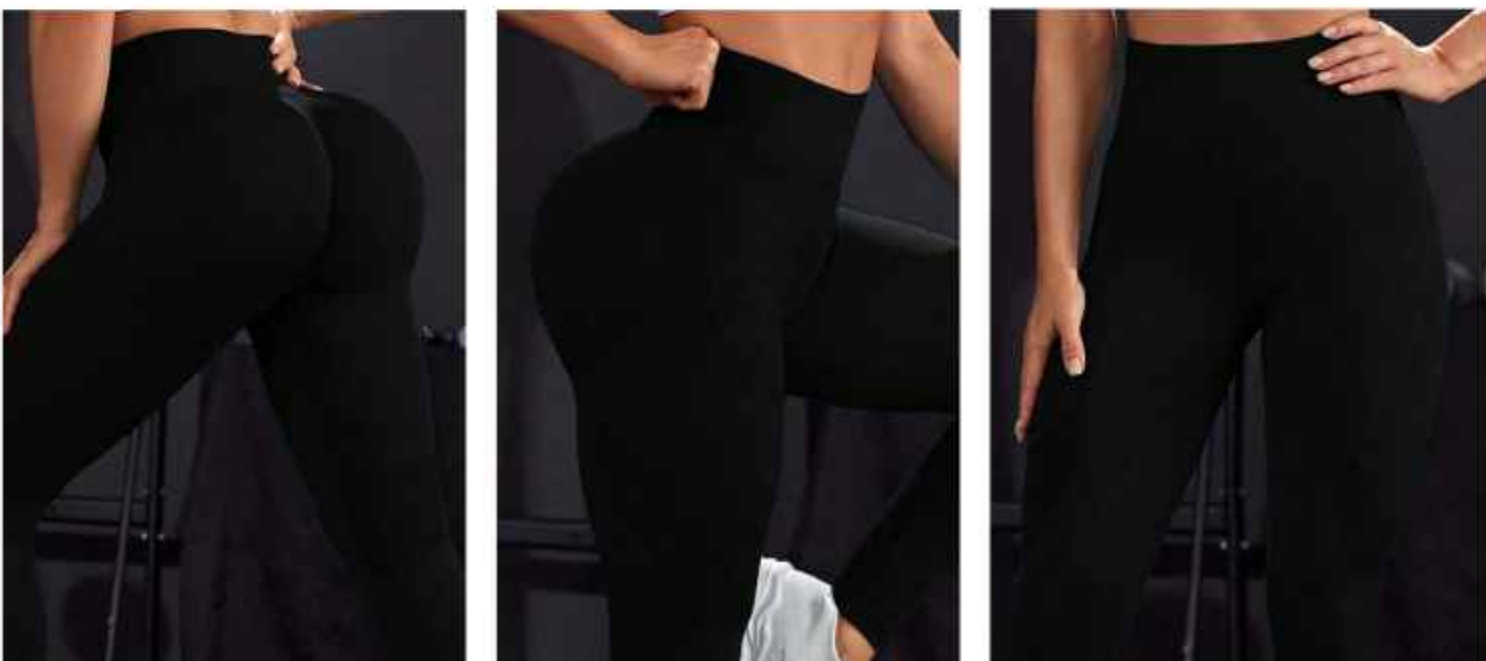
Material: 90% Nylon + 10% Spandex

Size: S - L

Colour:  

## Style Details:

- Rise the Hips Form Flattering Contours
  - Comfortable and Anti-cellulite Properties
- Free to Stretch



SIZE	S	M	L
1/2TOP WAIST	11.4	12.2	13
1/2HIP	13.4	14.2	15
LEG OPENING	7.1	7.6	8.1
OUTSEAM LENGTH	31.5	32.3	33.1

All measurements are in inches.





# 9K448

**Price:** \$ 3.60

**Stitching:** Seamless

**Material:** 90% Nylon + 10% Spandex

**Size:** S - L

**Colour:** 

### Style Details:

- Eye-Catching Logo at the Waist for a Stylish Statement
- No Visible Seams in the Crotch for a Smooth, Confident Fit

SIZE	S	M	L
1/2TOP WAIST	11.8	12.6	13.4
1/2HIP	14.6	15.4	16.2
LEG OPENING	8.3	8.8	9.2
OUTSEAM LENGTH	31.1	31.9	32.7

All measurements are in inches.



# 9K464

**Price:** \$ 4.20

**Stitching:** Seamless

**Material:** 90% Nylon + 10% Spandex

**Size:** S - L

**Colour:** 

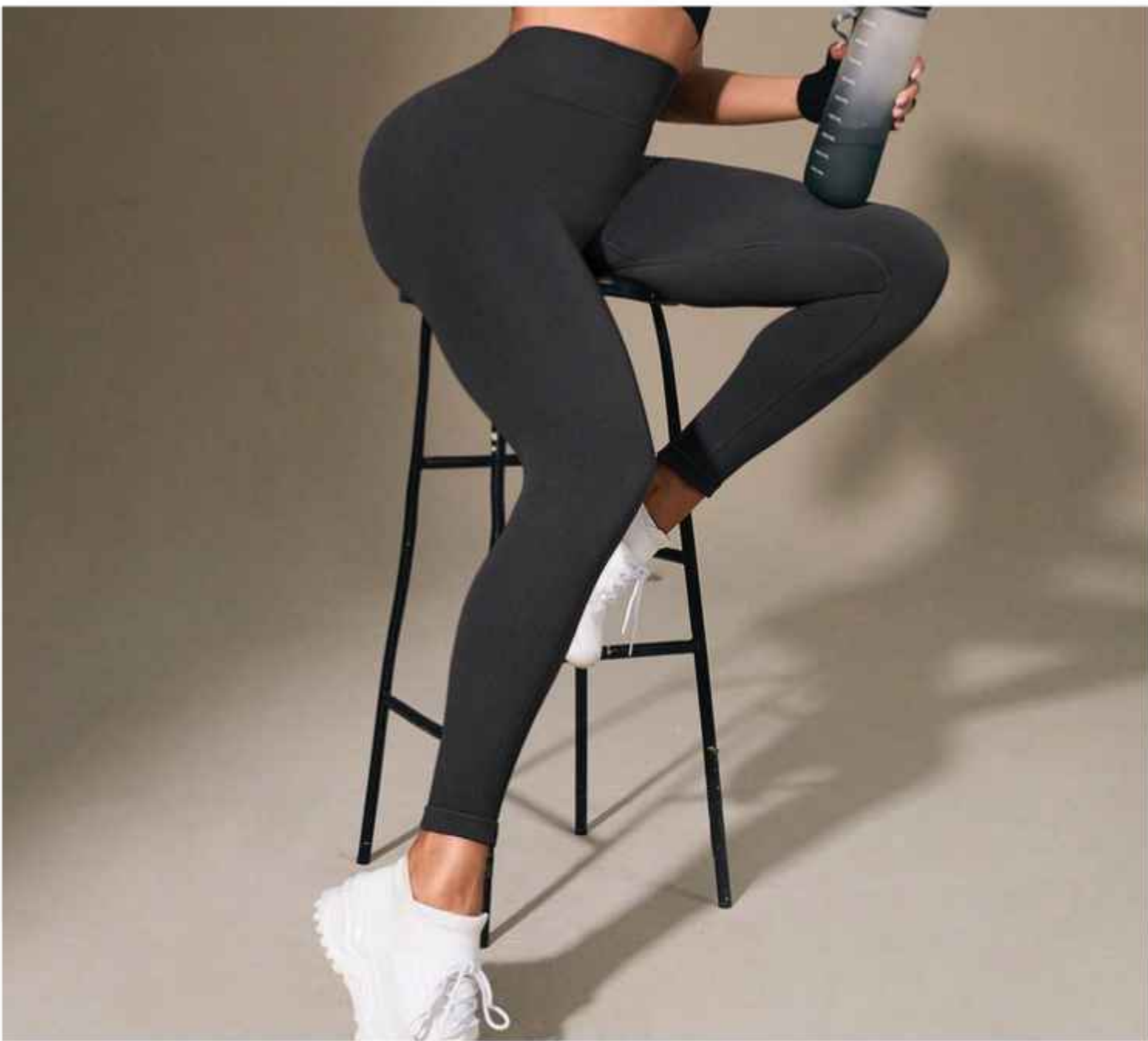
### Style Details:

- Bare-Skin Seamless Fabric
- Versatile Fit for Any Occasion

SIZE	S	M	L
1/2TOP WAIST	11.4	12.2	13
1/2HIP	13.8	14.6	15.4
LEG OPENING	7.9	8.4	8.8
OUTSEAM LENGTH	31.5	32.3	33.1

All measurements are in inches.





# 9K465

Price: \$ 4.00

Stitching: Seamless

Material: 90% Nylon + 10% Spandex

Size: S - L

Colour:  

## Style Details:

- Ultimate Stretch Comfort
- Versatile Black and Grey Tones for Any Occasion



SIZE	S	M	L
1/2TOP WAIST	11.2	12	12.8
1/2HIP	14.4	15.2	16
LEG OPENING	8.3	8.7	9.2
OUTSEAM LENGTH	31.5	32.3	33.1

All measurements are in inches.



# 9K478

**Price:** \$ 4.40

**Stitching:** Seamless

**Material:** 90% Nylon + 10% Spandex

**Size:** S - L

**Colour:**  

### Style Details:

- Rise the Hips Form Flattering Contours
- Comfortable and Anti-cellulite Properties

Free to Stretch



SIZE	S	M	L
1/2TOP WAIST	11	11.8	12.6
1/2HIP	14.2	15	15.8
LEG OPENING	7.5	8	8.4
OUTSEAM LENGTH	32.3	33.1	33.9

All measurements are in inches.





# 9K493

**Price:** \$ 4.20

**Stitching:** Seamless

**Material:** 90% Nylon + 10% Spandex

**Size:** S - L

**Colour:** ●

### Style Details:

- Rise the Hips Form Flattering Contours
- Comfortable and Anti-cellulite Properties

Free to Stretch

SIZE	S	M	L
1/2TOP WAIST	11.4	12.2	13
1/2HIP	13.4	14.2	15
LEG OPENING	8.3	8.8	9.2
OUTSEAM LENGTH	30.7	31.5	32.3

All measurements are in inches.





# 9K503

**Price:** \$ 4.40

**Stitching:** Seamless

**Material:** 90% Nylon + 10% Spandex

**Size:** S - L

**Colour:** 

### Style Details:

- No Unwanted Crotch Outline, Just Freedom to Move
- Skin-Friendly Bare-Skin Fabric

SIZE	S	M	L
1/2TOP WAIST	11.4	12.2	13
1/2HIP	13.8	14.6	15.4
LEG OPENING	7.5	8	8.4
OUTSEAM LENGTH	30.7	31.5	32.3

All measurements are in inches.





# 9K507

**Price:** \$ 4.50

**Stitching:** Seamless

**Material:** 90% Nylon + 10% Spandex

**Size:** S - L

**Colour:** ●

## Style Details:

- High-Rise and Shaping for a Sculpted Waist
- Chic and Sexy, Ideal for Outside Wear

SIZE	S	M	L
1/2TOP WAIST	11.2	12	12.8
1/2HIP	14.2	15	15.8
LEG OPENING	7.9	8.4	8.8
OUTSEAM LENGTH	31.5	32.3	33.1

All measurements are in inches.






# 9K508

**Price:** \$ 4.80

**Stitching:** Seamless

**Material:** 65% Nylon + Polyester25%+10% Spandex

**Size:** S - L

**Colour:** 

### Style Details:

- Bold Lettering on the Waistband
- Form-Fitting and Butt-Lifting Design

SIZE	S	M	L
1/2TOP WAIST	11.4	12.2	13
1/2HIP	14.2	15.0	15.8
LEG OPENING	7.9	8.4	8.8
OUTSEAM LENGTH	31.1	31.9	32.7

All measurements are in inches.





# 9K513

**Price:** \$ 4.20

**Stitching:** Seamless

**Material:** 90% Nylon + 10% Spandex

**Size:** S - L

**Colour:** 

### Style Details:

- Stylish Waistband with Decorative Edging
- Sculpting Fit, Rapid-Dry Performance

SIZE	S	M	L
1/2TOP WAIST	11.4	11.6	11.8
1/2HIP	13.8	14.6	15.4
LEG OPENING	7.9	8.4	8.7
OUTSEAM LENGTH	31.5	32.3	33.1

All measurements are in inches.



# 9K518

**Price:** \$ 3.80

**Stitching:** Seamless

**Material:** 90% Nylon + 10% Spandex

**Size:** S - L

**Colour:** 

## Style Details:

- Unique Organization
- Elastic High-Waist Fit with Butt-Lifting Effect

SIZE	S	M	L
1/2TOP WAIST	11.0	11.8	12.6
1/2HIP	14.2	15.0	15.8
LEG OPENING	7.5	8.0	8.4
OUTSEAM LENGTH	32.3	33.1	33.9

All measurements are in inches.





# 9K520

**Price:** \$ 4.60

**Stitching:** Seamless

**Material:** 90% Nylon + 10% Spandex

**Size:** S - L

**Colour:** 

## Style Details:

- High Stretch
- Skin-Like Bare-Sensation Fabric

SIZE	S	M	L
1/2TOP WAIST	11.0	11.8	12.6
1/2HIP	12.2	13.0	13.8
LEG OPENING	7.1	7.6	8.0
OUTSEAM LENGTH	31.1	31.9	32.7

All measurements are in inches.





# 9K535

**Price:** \$ 5.90

**Stitching:** Seamless

**Material:** 90% Nylon + 10% Spandex

**Size:** S - L

**Colour:** 

## Style Details:

- Fast-Drying, Moisture-Wicking Fabric
- Flawless Seamless Fabric, Sensual Design

SIZE	S	M	L
1/2TOP WAIST	11.4	12.2	13
1/2HIP	12.6	13.4	14.2
LEG OPENING	7.1	7.6	8.0
OUTSEAM LENGTH	31.1	31.9	32.7

All measurements are in inches.





# LT525

Price: \$ 6.20

Stitching: Seamless

Material: 90%Polyamide+10%Elastane

Size: S - L

Colour:

### Style Details:

- 交叉美背设计
- 紧身弹力布料, 凸显身材

SIZE	S	M	L
1/2 CHEST	13	13.8	14.5
1/2 HEM	12.2	13	13.8
SLEEVE LENGTH	17.3	17.7	18.1
SLEEVE LENGTH	17.3	17.7	18.1
SLEEVE LENGTH	17.3	17.7	18.1

All measurements are in inches.



# JUMPSUIT






# F228

**Price:** \$ 17.5

**Stitching:** Cut&sewn

**Material:** 76% Nylon + 24% Lycra

**Size:** S - XL

**Colour:** 

### Style Details:

- Gentle on the skin, breathable
- moisture-absorbing, and stretchable

SIZE	S	M	L	XL
LENGTH	24.0	24.6	25.2	25.8
1/2 CHEST	13.8	14.6	15.4	16.2
1/2 TOP WAIST	11.0	11.8	12.6	13.4

All measurements are in inches.



# SK0402

**Price:** \$ 8.5

**Stitching:** Seamless

**Material:** 82% nylon + 18% spandex

**Size:** S - XL

**Colour:**

### Style Details:

- Soft, comfortable fabric with superior strength and resistance

SIZE	S	M	L	XL
LENGTH	18.1	18.7	19.3	19.9
1/2 CHEST	7.9	8.5	9.1	9.7
1/2 TOP WAIST	8.1	8.7	9.3	9.9
1/2 HIP	7.9	8.5	9.1	9.7

All measurements are in inches.





# SK0403

**Price:** \$ 8

**Stitching:** Seamless

**Material:** 82% nylon + 18% spandex

**Size:** S - XL

**Colour:** 

### Style Details:

- Durable, Wrinkle-Resistant
- Quick-Dry, and Breathable

SIZE	S	M	L	XL
LENGTH	20.1	20.5	20.9	21.3
1/2 CHEST	8.1	8.7	9.3	9.9
1/2 TOP WAIST	8.1	8.7	9.3	9.9
1/2 HIP	9.1	9.7	10.2	10.8

All measurements are in inches.



# SK0408

**Price:** \$7.5

**Stitching:** Seamless

**Material:** 82% nylon + 18% spandex

**Size:** S - XL

**Colour:**

**Style Details:**  
• Crafted for Comfort, Defined by Quality

SIZE	S	M	L	XL
LENGTH	21.3	21.7	22.1	22.5
1/2 CHEST	7.7	8.3	8.9	9.5
1/2 TOP WAIST	7.5	8.1	8.7	9.3
1/2 HIP	7.7	8.3	8.9	9.5

All measurements are in inches.





# SK1201

**Price:** \$ 10.5

**Stitching:** Cut&sewn

**Material:** 76% Nylon + 24% Lycra

**Size:** S - XL

**Gram Weight:** 90G

**Colour:** 

**Style Details:**

- Enhanced Durability with Dual Layers

SIZE	S	M	L	XL
1/2 CHEST	14.2	15.0	15.8	16.5
1/2 TOP WAIST	10.8	11.6	12.4	13.2
SLEEVE LENGT H	23.4	24.0	24.6	25.2

All measurements are in inches.



# SK1202


**Price:** \$ 7.65

**Stitching:** Cut&sewn

**Material:** 76% Nylon + 24% Lycra

**Size:** S - XL

**Gram Weight:** 90G

**Colour:** 

### Style Details:

- High-Elasticity Backless Bodysuit
- Confidence Meets Comfort

SIZE	S	M	L	XL
1/2 CHEST	13.5	14.3	15.1	15.9
1/2 TOP WAIST	10.6	11.4	12.2	13.0
1/2 HIP	13.5	14.3	15.1	15.9

All measurements are in inches.





# SK1203

Price: \$ 8

Stitching: Cut&sewn

Material: 76% Nylon + 24% Lycra

Size: S - XL

Gram Weight: 90G

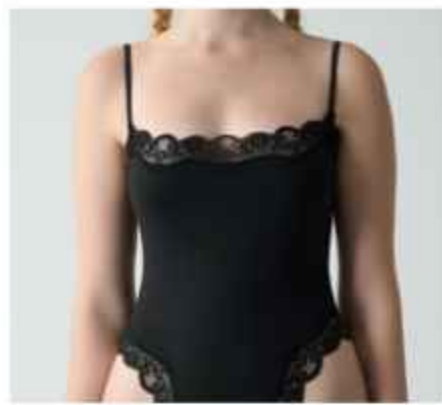
Colour: 

### Style Details:

- Breathable High-Collar Bodysuit
- Double-Layer Comfort with Maximum Stretch

SIZE	S	M	L	XL
LENGTH	21.2	21.9	22.6	23.2
1/2 CHEST	14.2	15.0	15.8	16.5
1/2 TOP WAIST	10.8	11.6	12.4	13.2
1/2 HIP	11.8	12.2	12.6	13.0

All measurements are in inches.



# SK1204

**Price:** \$ 7.25

**Stitching:** Cut&sewn

**Material:** 76% Nylon + 24% Lycra

**Size:** S - XL

**Gram Weight:** 90G

**Colour:** 

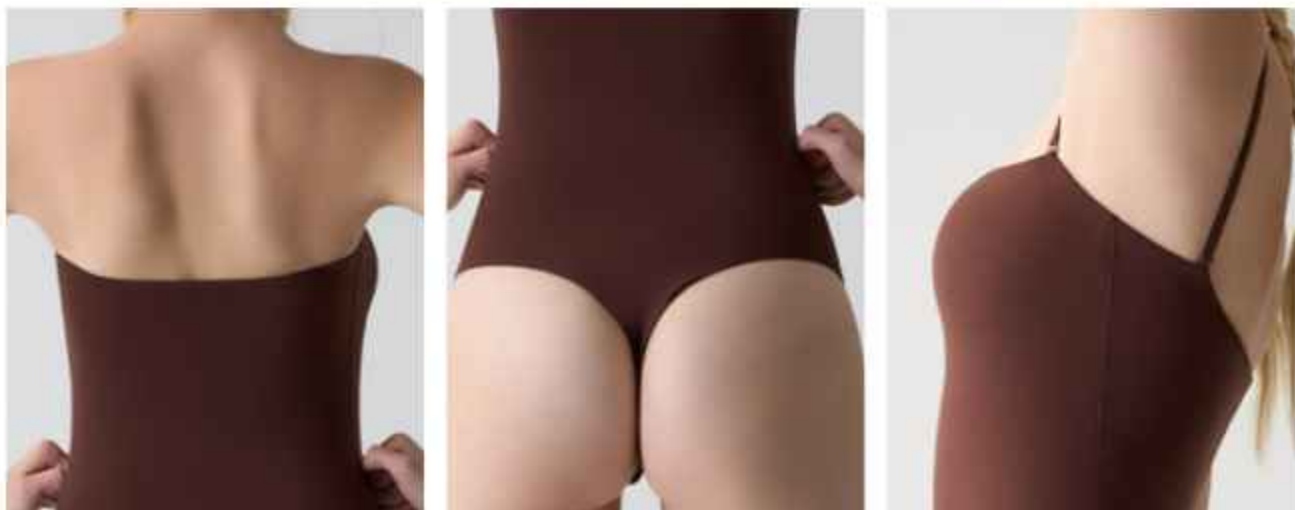
**Style Details:**

- Lace-Trimmed Slimming Cami
- Double-Layer Design with Adjustable Fit

SIZE	S	M	L	XL
LENGTH	15.2	15.8	16.2	16.7
1/2 CHEST	10.6	11.4	12.2	13.0

All measurements are in inches.





# SK1210

**Price:** \$ 7.9

**Stitching:** Cut&sewn

**Material:** 76% Nylon + 24% Lycra

**Size:** XS - XL

**Gram Weight:** 90G

**Colour:** 

## Style Details:

- Thin-Fit Shapewear Bodysuit with Removable Straps
- Sculpt and Move with Ease

SIZE	XS	S	M	L	XL
LENGTH	16.8	17.4	18.0	18.6	19.2
1/2 CHEST	12.0	12.8	13.6	14.4	15.2
1/2 TOP WAIST	9.9	10.7	11.5	12.3	13.1

All measurements are in inches.



# SK1221

Price:

\$ 9.2

Stitching:

Cut&sewn

Material:

76% Nylon + 24% Lycra

Size:

S - XL

Gram Weight:

90G

Colour:



Style Details:

- All-in-One Short-Sleeve Bodysuit
- Lightweight, Flexible, and Yoga-Friendly

SIZE	S	M	L	XL
LENGTH	21.7	22.2	22.7	23.1
1/2 CHEST	15.0	15.8	16.5	17.3
SLEEVE LENGTH	5.9	6.2	6.5	6.8
1/2 HIP	14.6	15.4	16.2	16.9

All measurements are in inches.





# SK1224

**Price:** \$ 7.65

**Stitching:** Cut&sewn

**Material:** 76% Nylon + 24% Lycra

**Size:** S - XL

**Gram Weight:** 90G

**Colour:**

**Style Details:**

- Sexy Lace Adjustable Strappy Bodysuit
- Sculpting, Breathable, and Butt-Lifting

SIZE	S	M	L	XL
LENGTH	15.2	15.8	16.2	16.7
1/2 CHEST	10.6	11.4	12.2	13.0

All measurements are in inches.



# SK1227

**Price:** \$ 7.9

**Stitching:** Cut&sewn

**Material:** 76% Nylon + 24% Lycra

**Size:** S - XL

**Gram Weight:** 90G

**Colour:** 

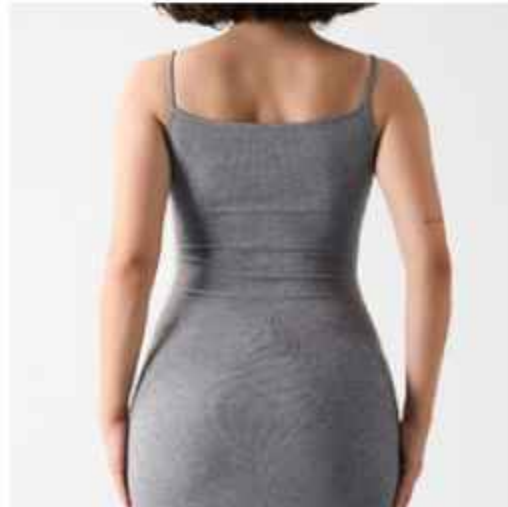
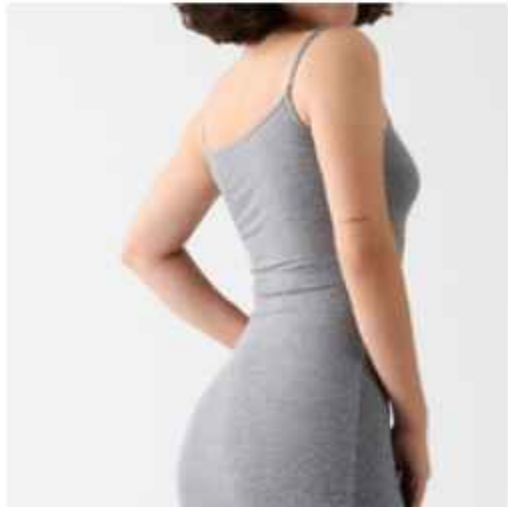
**Style Details:**

- High-Elasticity Shapewear Bodysuit
- Double-Layer for a Flawless Fit

SIZE	S	M	L	XL
LENGTH	17.4	18.0	18.6	19.2
1/2 CHEST	12.8	13.6	14.4	15.2
1/2 TOP WAIST	10.7	11.5	12.3	13.1

All measurements are in inches.





# SK1229

**Price:** \$ 9.2

**Stitching:** Cut&sewn

**Material:** 91% Modal + 9% Spandex

**Size:** S - XL

**Gram Weight:** 250G

**Colour:** 

**Style Details:**

- Sexy Slim-Fit Modal Nightgown
- Ribbed Straps for Effortless Elegance

SIZE	S	M	L	XL
LENGTH	18.1	18.7	19.3	19.9
1/2 CHEST	7.9	8.5	9.1	9.7
1/2 TOP WAIST	8.1	8.7	9.3	9.9
1/2 HIP	7.9	8.5	9.1	9.7

All measurements are in inches.



# SK1230

**Price:** \$7.5

**Stitching:** Cut&sewn

**Material:** 76% nylon + 24% spandex

**Size:** S - XL

**Gram Weight:** 90G

**Colour:**

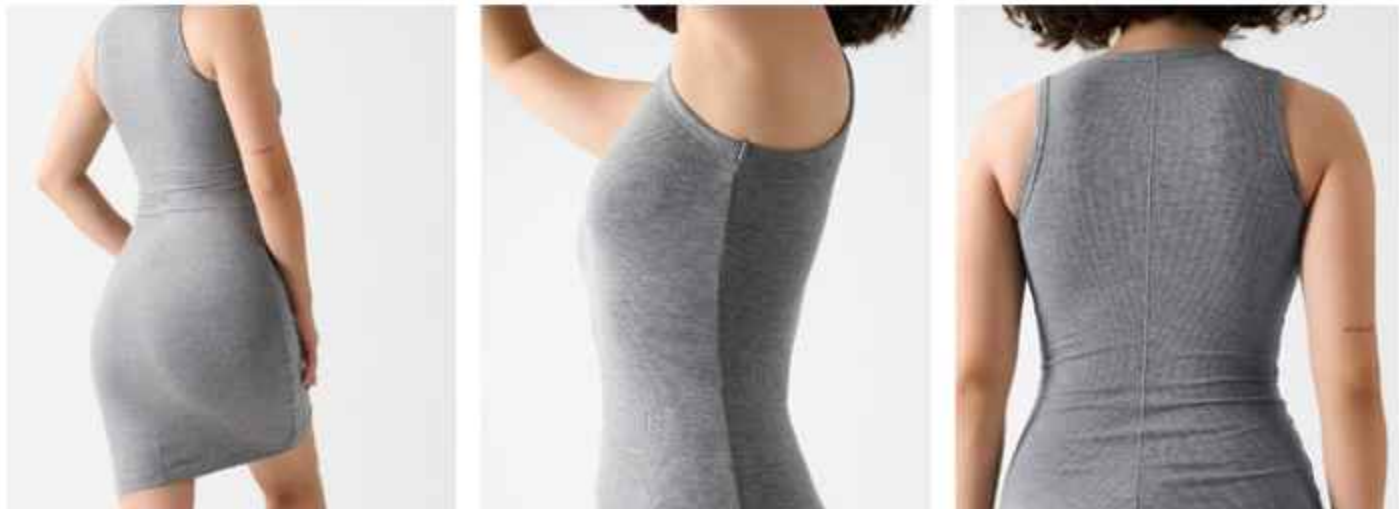
### Style Details:

- Soft Modal Skirt: Comfortable, Fashionable, and Ideal for Home or Leisure

SIZE	S	M	L	XL
LENGTH	24.8	25.2	25.6	26.0
1/2 CHEST	13.8	14.6	15.4	16.2
1/2 TOP WAIST	11.4	12.2	13.0	13.8
1/2 HIP	16.2	16.9	17.7	18.5

All measurements are in inches.





# SK1240

**Price:** \$ 8.5

**Stitching:** Cut&sewn

**Material:** 91% Modal + 9% Spandex

**Size:** S - XL

**Gram Weight:** 250G

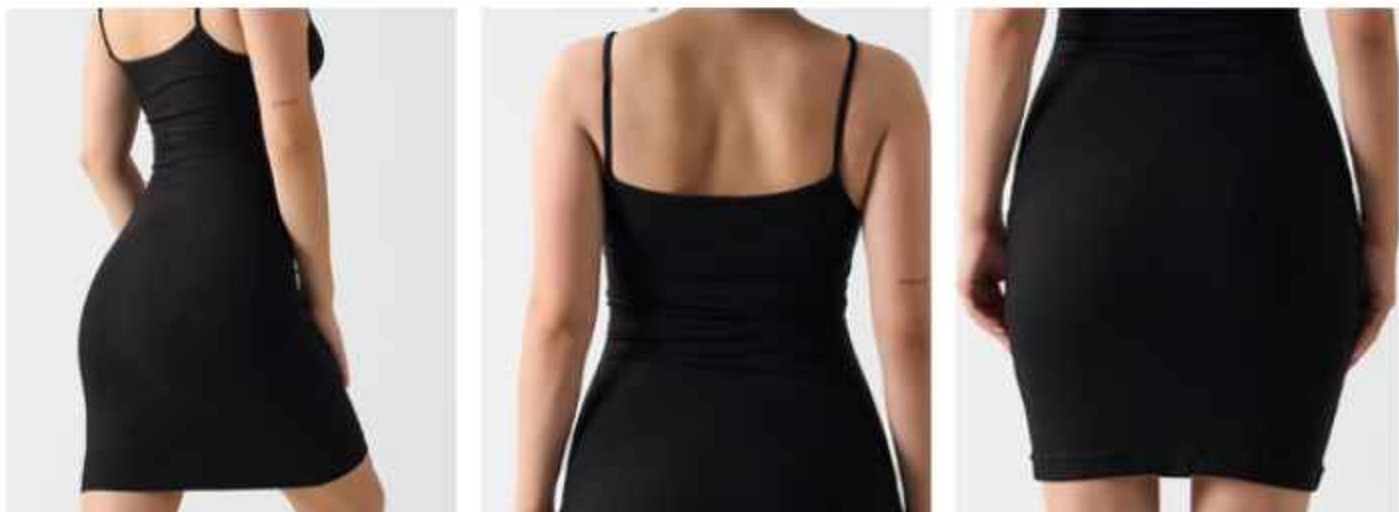
**Colour:** 

### Style Details:

- Modern Ribbed Sleeveless Dress
- Cotton-Spandex Comfort with a Fashion-Forward Look

SIZE	S	M	L	XL
LENGTH	32.3	33.1	33.8	34.6
1/2 CHEST	12.4	13.2	14.0	14.8
1/2 TOP WAIST	9.9	10.6	11.4	12.2
1/2 HIP	14.1	14.9	15.7	16.5

All measurements are in inches.



# SK1241

**Price:** \$ 7.65

**Stitching:** Cut&sewn

**Material:** 91% Modal + 9% Spandex

**Size:** S - XL

**Gram Weight:** 250G

**Colour:** 

### Style Details:

- Sleek Ribbed Bodycon Dress
- Strappy Design for a Flattering Silhouette

SIZE	S	M	L	XL
LENGTH	27.0	27.6	28.3	29.0
1/2 CHEST	12.4	13.2	14.0	14.8
1/2 TOP WAIST	9.9	10.6	11.4	12.2
1/2 HIP	14.2	15.0	15.8	16.5

All measurements are in inches.





# SK1250

**Price:** \$ 7.95

**Stitching:** Cut&sewn

**Material:** 76% nylon + 24% spandex

**Size:** S - XL

**Gram Weight:** 90G

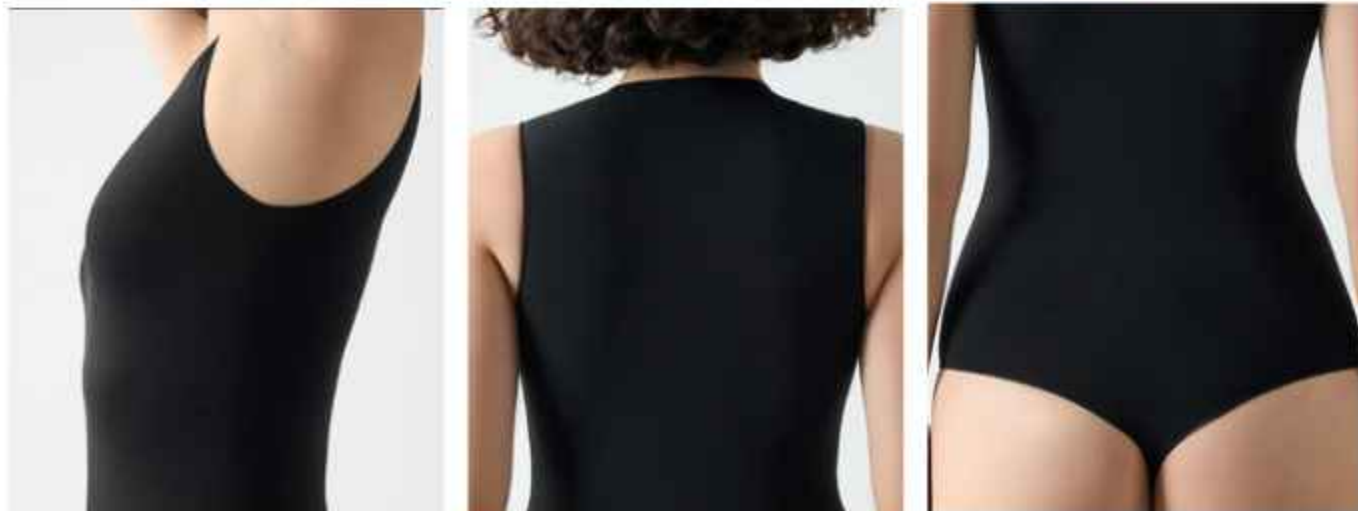
**Colour:** 

### Style Details:

- Slope-Shoulder Stretch Jumpsuit: High Elasticity, Single-Shoulder Elegance

SIZE	S	M	L	XL
LENGTH	20.3	21.0	21.7	22.4
1/2 CHEST	14.5	15.2	16.0	16.8
1/2 TOP WAIST	11.0	11.8	12.6	13.4
1/2 HIP	12.6	13.4	14.2	15.0

All measurements are in inches.



# SK0603

**Price:** \$ 7

**Stitching:** Cut&sewn

**Material:** 82% nylon + 18% spandex

**Size:** S - XL

**Colour:** 

### Style Details:

- Seamless, Raw-Edge Sleeveless Bodysuit
- One-Piece Fitness Perfection

SIZE	S	M	L	XL
LENGTH	21.7	22.1	22.5	22.9
1/2 CHEST	12.2	13.2	14.2	15.2

All measurements are in inches.





# SK1266

**Price:** \$ 8.95

**Stitching:** Cut&sewn

**Material:** 76% nylon + 24% spandex

**Size:** S - XL

**Gram Weight:** 90G

**Colour:**

**Style Details:**

- Breathable Lace-Up Bodysuit
- High-Stretch Fabric for Effortless Performance

SIZE	S	M	L	XL
LENGTH	20.7	21.4	22.0	22.7
1/2 CHEST	14.2	15.0	15.8	16.5
1/2 TOP WAIST	11.4	12.2	13.0	13.8
1/2 HIP	14.2	15.0	15.8	16.5

All measurements are in inches.



# SK0601

Price: \$7

Stitching: Cut&sewn

Material: 82% nylon + 18% spandex

Size: S - XL

Colour: 

### Style Details:

- Seamless Bodysuit for Women
- High-Elasticity, Butt-Lifting, and Ultra-Stylish

SIZE	S	M	L	XL
LENGTH	18.9	19.3	19.7	20.1
1/2 CHEST	12.6	13.6	14.6	15.6

All measurements are in inches.





# SK0713

**Price:** \$ 6.85

**Stitching:** Cut&sewn

**Material:** 82% nylon + 18% spandex

**Size:** S - XL

**Colour:**

**Style Details:**

- Super Soft, High-Stretch Seamless Sports & Lounge Top

SIZE	S	M	L	XL
LENGTH	15.0	15.6	16.2	16.7
1/2 CHEST	11.4	12.4	13.4	14.4

All measurements are in inches.



# SK0710

**Price:** \$ 4

**Stitching:** Cut&sewn

**Material:** 82% nylon + 18% spandex

**Size:** S - XL

**Colour:** 

### Style Details:

- Seamless Design, High-Waist Support, Ultra-Soft Feel
- Perfect for Active Lifestyles

SIZE	S	M	L	XL
1/2 TOP WAIST	11.0	11.8	12.6	13.4
1/2 HIP	11.4	12.4	13.4	14.2

All measurements are in inches.





# SK1306

**Price:** \$ 9.6

**Stitching:** Cut&sewn

**Material:** 76% nylon + 24% spandex

**Size:** S - XL

**Gram Weight:** 90G

**Colour:**

**Style Details:**

- Slimming Silhouette Meets Sensual Lace

SIZE	S	M	L	XL
LENGTH	23.0	23.8	24.5	25.2
1/2 CHEST	13.8	14.6	15.4	16.2
1/2 TOP WAIST	11.3	12.1	12.9	13.7

All measurements are in inches.



# SK0402

**Price:** \$ 8.5

**Stitching:** Seamless

**Material:** 82% nylon + 18% spandex

**Size:** S - XL

**Colour:** 

### Style Details:

- Soft, comfortable fabric with superior strength and resistance

SIZE	S	M	L	XL
LENGTH	18.1	18.7	19.3	19.9
1/2 CHEST	7.9	8.5	9.1	9.7
1/2 TOP WAIST	8.1	8.7	9.3	9.9
1/2 HIP	7.9	8.5	9.1	9.7

All measurements are in inches.





# SK0403

**Price:** \$ 8

**Stitching:** Seamless

**Material:** 82% nylon + 18% spandex

**Size:** S - XL

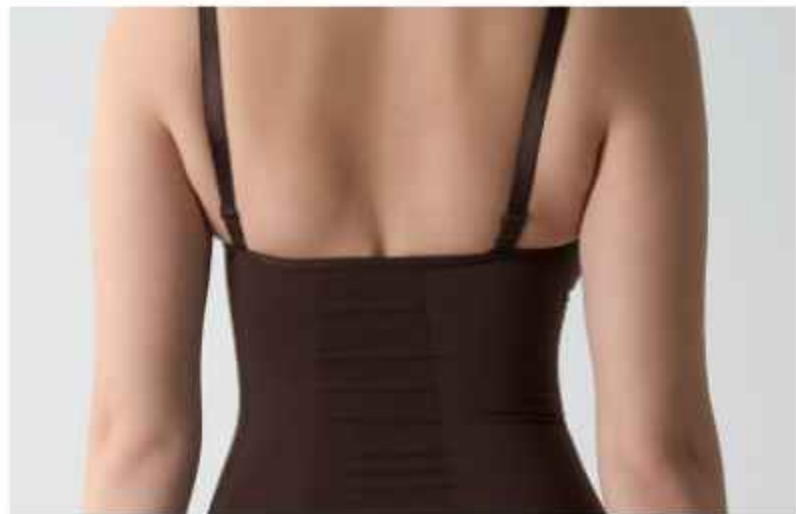
**Colour:** 

### Style Details:

- Durable, Wrinkle-Resistant
- Quick-Dry, and Breathable

SIZE	S	M	L	XL
LENGTH	20.1	20.5	20.9	21.3
1/2 CHEST	8.1	8.7	9.3	9.9
1/2 TOP WAIST	8.1	8.7	9.3	9.9
1/2 HIP	9.1	9.7	10.2	10.8

All measurements are in inches.



# SK0408

**Price:** \$7.5

**Stitching:** Seamless

**Material:** 82% nylon + 18% spandex

**Size:** S - XL

**Colour:**

### Style Details:

- Crafted for Comfort, Defined by Quality

SIZE	S	M	L	XL
LENGTH	21.3	21.7	22.1	22.5
1/2 CHEST	7.7	8.3	8.9	9.5
1/2 TOP WAIST	7.5	8.1	8.7	9.3
1/2 HIP	7.7	8.3	8.9	9.5

All measurements are in inches.





BRA



# 60206

**Price:** \$ 8.40

**Stitching:** Cut&sewn

**Material:** 80% Nylon + 20% spandex

**Weight:** 220g

**Size:** S - XL

**Colour:**

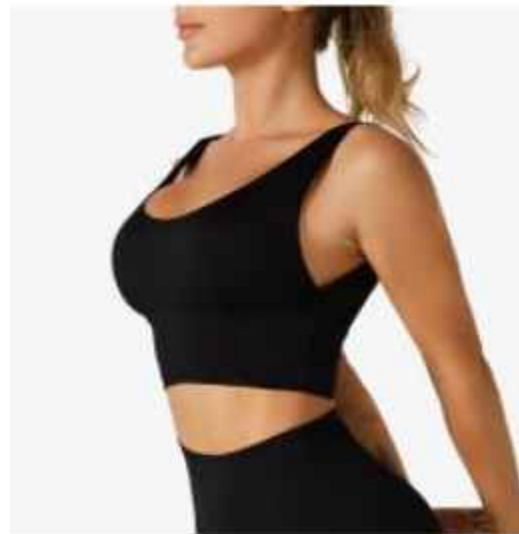
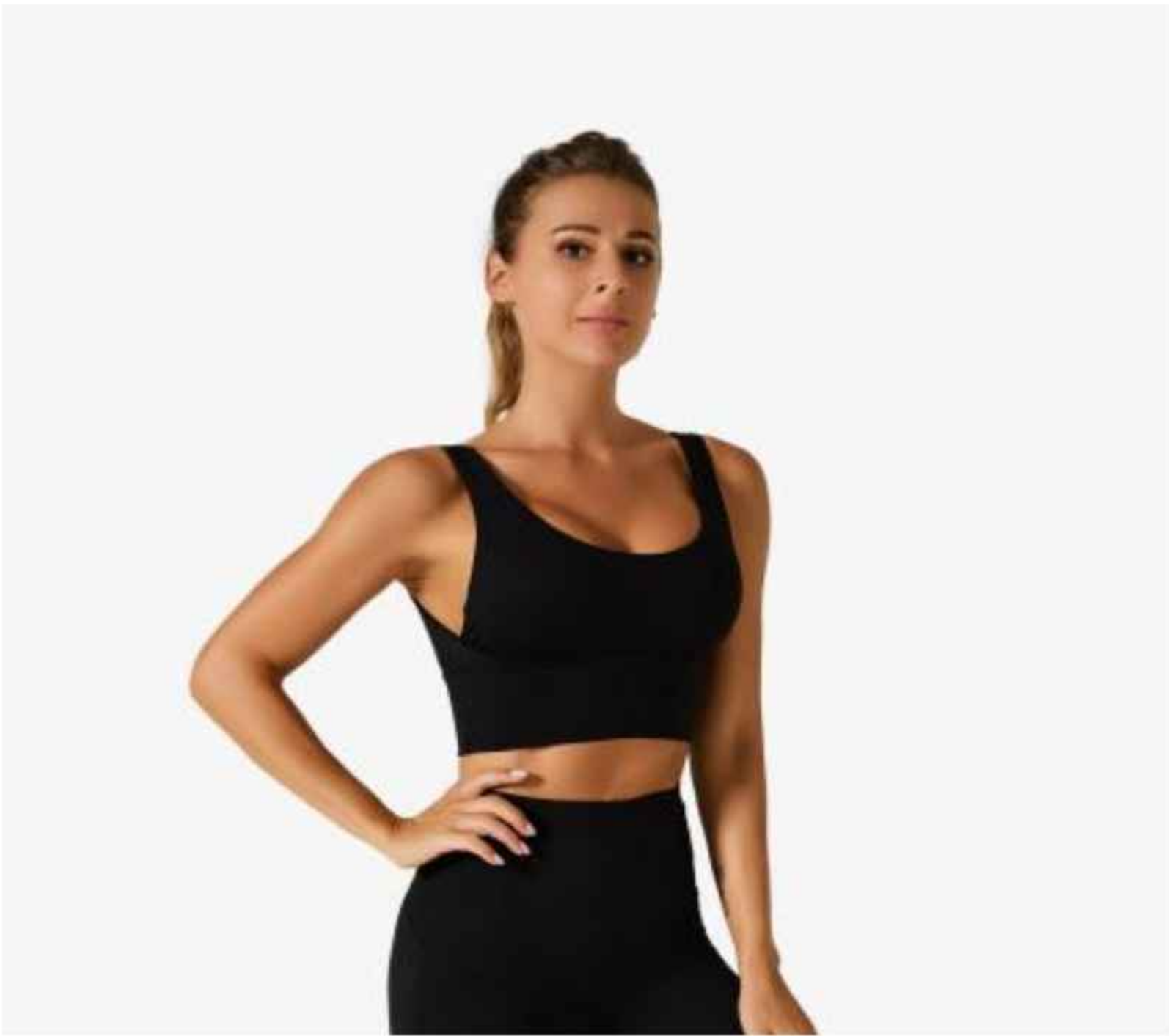
**Style Details:**

- Integrated Fixed Padding
- Broad Shoulder Straps for Enhanced Support

SIZE	S	M	L	XL
1/2 CHEST	13	13.8	14.5	15.3
1/2 HEM	12.2	13	13.8	14.5
FRONT LENGTH	17.3	17.7	18.1	18.5

All measurements are in inches.





# FSP1966-8

**Price:** \$ 5.40

**Stitching:** Cut&sewn

**Material:** 76% Nylon + 24% spandex

**Weight:** 220g

**Size:** S - XXL

**Colour:**

### Style Details:

- U-Back Design
- 360° Full Coverage

SIZE	S	M	L	XL	XXL
1/2 CHEST	11.8	12.6	13.4	14.2	15
1/2 HEM	11.4	12.2	13	13.8	14.6
FRONT LENGTH	11.8	12.4	13	13.6	14.2

All measurements are in inches.



# JYMB005

**Price:** \$ 4.00

**Stitching:** Cut&sewn

**Material:** 87% Nylon + 13% spandex

**Size:** S - XXL

**Colour:**   

**Style Details:**

- 3D Molding Cups
- Sexy Back Design



SIZE	S	M	L	XL	XXL
1/2 CHEST	13.4	14.2	15	15.8	16.6
1/2 HEM	11.4	12.2	13	13.8	14.6
FRONT LENGTH	15.2	15.6	16	16.4	16.8

All measurements are in inches.





# JYMN003

**Price:** \$ 3.80

**Stitching:** Cut&sewn

**Material:** 87% Nylon + 13% spandex

**Weight:** 220g

**Size:** S - XXL

**Colour:** 

**Style Details:**

- Color-block U-neck Design
- Elastic Comfort Fit



SIZE	S	M	L	XL	XXL
1/2 CHEST	13	13.8	14.6	15.4	16.2
1/2 HEM	11	11.8	12.6	13.4	14.2
FRONT LENGTH	12.2	12.6	13	13.4	13.8

All measurements are in inches.





# MTJWXX

**Price:** \$ 4.80

**Stitching:** Cut&sewn

**Material:** 76% Nylon + 24% spandex

**Size:** S - XXL

**Colour:**

**Style Details:**

- Lightweight Barely-There Feel
- Hook-Free Thin Straps

SIZE	S	M	L	XL	XXL
<b>1/2 CHEST</b>	14.2-15.6	14.9-16.3	15.6-17	16.5-17.6	17-18.3
<b>1/2 HEM</b>	12.6-14.2	13.3-14.9	14-15.6	14.7-16.5	15.4-16.9

All measurements are in inches.





# MTKWX

**Price:** \$ 3.40

**Stitching:** Cut&sewn

**Material:** 87% Nylon + 13% spandex

**Size:** S - XXL

**Colour:** 

**Style Details:**

- Wide Straps for Extra Support
- 3D Shaping for a Defined Bust

SIZE	S	M	L	XL	XXL
1/2 CHEST	12.6	13.4	14.2	15	15.8
1/2 HEM	10.6	11.4	12.2	13	13.8
FRONT LENGTH	12.6	13	13.4	13.8	14.2

All measurements are in inches.





# MTWXP01

**Price:** \$ 3.80

**Stitching:** Cut&sewn

**Material:** 87% Nylon + 13% spandex

**Size:** S - XXL

**Colour:** 

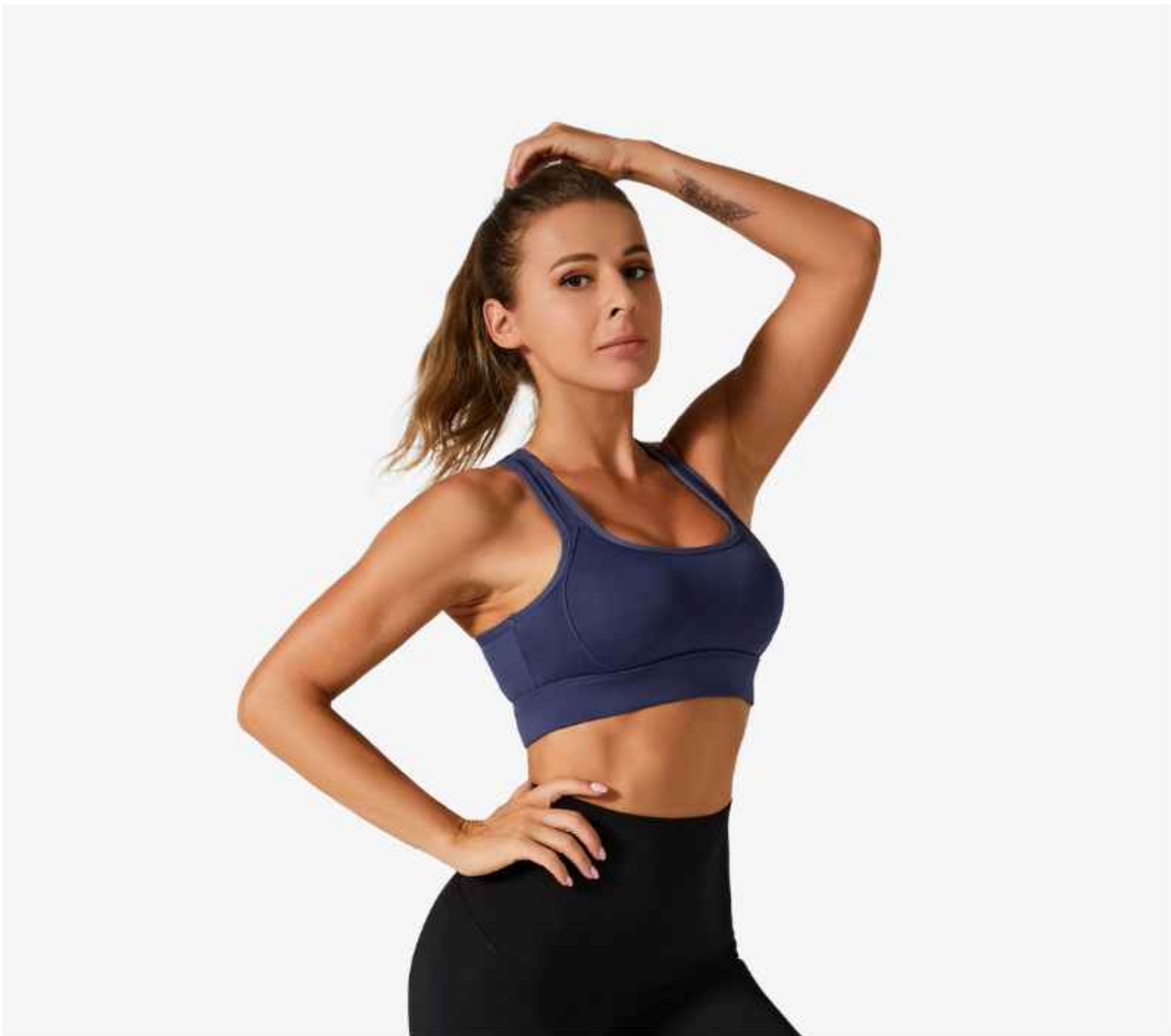
## Style Details:

- Wide Underband
- Enhanced Shock-Absorption

SIZE	S	M	L	XL	XXL
1/2 CHEST	11.8	12.6	13.4	14.2	15
1/2 HEM	11	11.8	12.6	13.4	14.2
FRONT LENGTH	11.4	11.8	12.2	12.6	13

All measurements are in inches.





# MTWXW01


**Price:** \$ 3.80

**Stitching:** Cut&sewn

**Material:** 87% Nylon + 13% spandex

**Weight:** 220g

**Size:** S - XXL

**Colour:** 

**Style Details:**

- Mesh Fabric
- Enhanced Moisture-Wicking Performance

SIZE	S	M	L	XL	XXL
1/2 CHEST	12.2	13	13.8	14.6	15.4
1/2 HEM	11.8	12.6	13.4	14.2	15
FRONT LENGTH	10.6	11	11.4	11.8	12.2

All measurements are in inches.





# MTWXW02

**Price:** \$ 4.60

**Stitching:** Cut&sewn

**Material:** 87% Nylon + 13% spandex

**Size:** S - XXL

**Colour:** 

**Style Details:**

- Butterfly Mesh Back
- Shrink and Shape-Resistant Fabri

SIZE	S	M	L	XL	XXL
1/2 CHEST	13	13.8	14.5	15.3	15.3
1/2 HEM	12.2	13	13.8	14.5	14.5
FRONT LENGTH	11.4	11.8	12.2	12.6	13

All measurements are in inches.





# MTXWX60

**Price:** \$ 3.40

**Stitching:** Cut&sewn

**Material:** 87% Nylon + 13% spandex

**Size:** S - XXL

**Colour:**

**Style Details:**

- Dual Straps for Reduced Pressure
- Shock-Absorbing Back Design

SIZE	S	M	L	XL	XXL
1/2 CHEST	13	13.8	14.6	15.4	16.2
1/2 HEM	11	11.8	12.6	13.4	14.2
FRONT LENGTH	13.8	14.2	14.6	15	15.4

All measurements are in inches.



# WX819

**Price:** \$ 5.70

**Stitching:** Cut&sewn

**Material:** 86% Nylon + 14% spandex

**Weight:** 220g

**Size:** S - XXL

**Colour:**

### Style Details:

- Cooling & Breathable Fabric
- Double-Strap Beauty Back Design

SIZE	S	M	L	XL	XXL
1/2 CHEST	13.4	14.2	15	15.8	16.6
1/2 HEM	11	11.8	12.6	13.4	14.2
FRONT LENGTH	12.2	12.6	13	13.8	14.2

All measurements are in inches.





# WX1249

**Price:** \$ 7.50

**Stitching:** Cut&sewn

**Material:** 80% Nylon + 20% spandex

**Size:** S - XL

**Colour:**

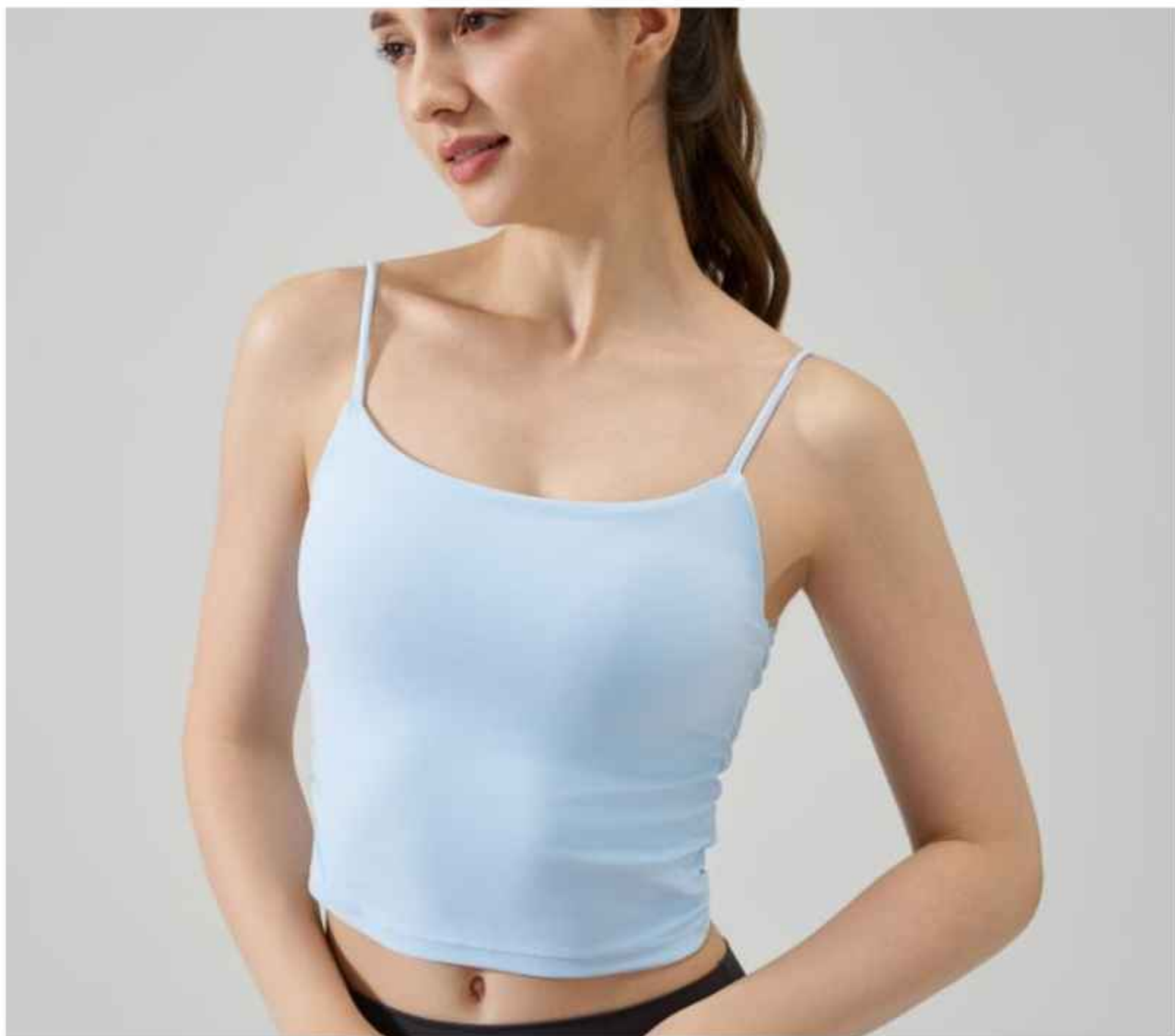
**Style Details:**

- Moisture-wicking and breathable fabric
- Firm support with no shifting

SIZE	S	M	L	XL
1/2 CHEST	13	14	15	16
1/2 HEM	11.8	12.8	13.8	14.8
FRONT LENGTH	12.2	12.6	13	13.4

All measurements are in inches.





# WX1252

**Price:** \$ 6.70

**Stitching:** Cut&sewn

**Material:** 80% Nylon + 20% spandex

**Weight:** 220g

**Size:** S - L

**Colour:**

### Style Details:

- Distinctive Pleated Design
- Anti-Pilling Fabric for Long-Lasting Smoothness

SIZE	S	M	L
1/2 CHEST	13.4	14.1	14.9
1/2 HEM	12.6	13.4	14.1
FRONT LENGTH	14.9	15.3	15.7

All measurements are in inches.





# WX1518

**Price:** \$ 8.60

**Stitching:** Cut&sewn

**Material:** 80% Nylon + 20% spandex

**Weight:** 220g

**Size:** S - XL

**Colour:** 

- Style Details:**
- Moisture-permeable and fast-drying textile
  - Wide Underband Support

SIZE	S	M	L	XL
<b>1/2 CHEST</b>	12.6	14.0	14.9	15.9
<b>1/2 HEM</b>	11	12	13	14
<b>FRONT LENGTH</b>	13.6	14	14.3	14.7

All measurements are in inches.





# WX1569

**Price:** \$ 7.30

**Stitching:** Cut&sewn

**Material:** 80% Nylon + 20% spandex

**Weight:** 195g

**Size:** S - XL

**Colour:**

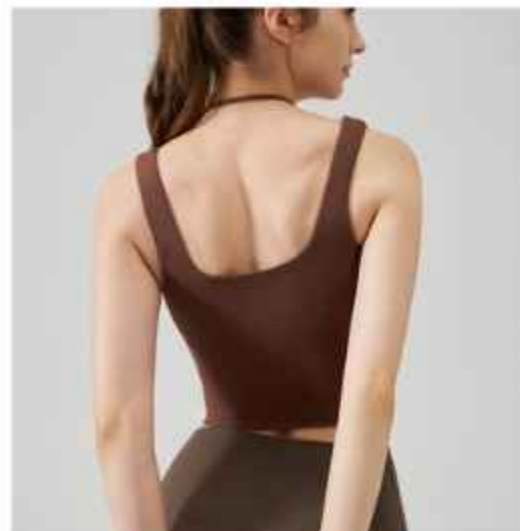
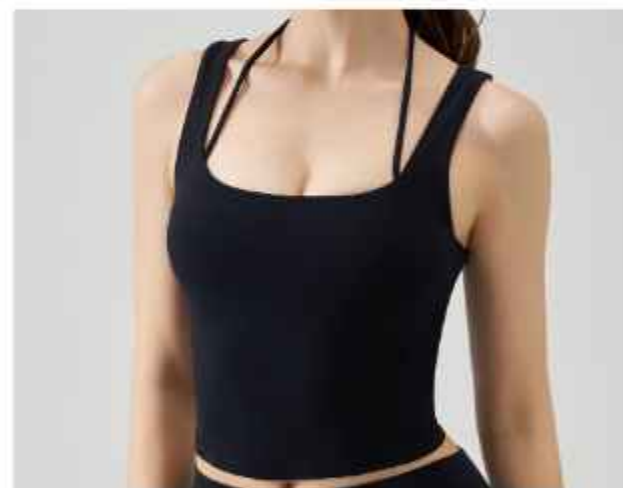
**Style Details:**

- The U-neckline
- Breathable integrated fixed padding

SIZE	S	M	L	XL
1/2 CHEST	13.5	14.2	15.4	16.4
1/2 HEM	11.8	12.8	13.8	14.8
FRONT LENGTH	12.4	12.8	13.2	13.6







# WX41007

**Price:** \$ 8.40

**Stitching:** Cut&sewn

**Material:** 80% Nylon + 20% spandex

**Weight:** 190g

**Size:** S - XL

**Colour:**

### Style Details:

- Removable Cup Pads
- Mesh Lining for Breathability

SIZE	S	M	L	XL
1/2 CHEST	13.4	14.3	15.3	16.3
1/2 HEM	12.6	13.6	14.5	15.5
FRONT LENGTH	15.3	15.7	16.3	16.9

All measurements are in inches.



# JYMA004

Price: \$ 4.40

Stitching: Cut&sewn

Material: 87% Nylon + 13% spandex

Size: S - XXL

Colour:

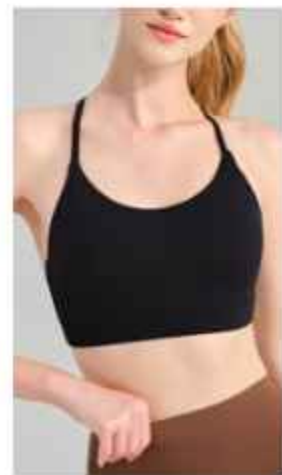
### Style Details:

- Pressure-Relieving & Elegant Back Design
- Firm Support

SIZE	S	M	L	XL	XXL
1/2 CHEST	13.4	14.2	15	15.8	16.6
FRONT LENGTH	13	13.4	13.8	14.2	14.6

All measurements are in inches.





# WX1411

**Price:** \$ 6.50

**Stitching:** Cut&sewn

**Material:** 80% Nylon + 20% spandex

**Size:** S - XL

**Colour:**

**Style Details:**

- Sexy back details
- Push-Up Technology

SIZE	S	M	L	XL
<b>1/2 CHEST</b>	12.2	13.2	14.1	15.1
<b>1/2 HEM</b>	11.2	12.2	13.2	14.1
<b>FRONT LENGTH</b>	11.0	11.4	11.8	12.2

All measurements are in inches.





# MTHDWX02

**Price:** \$ 4.00

**Stitching:** Cut&sewn

**Material:** 87% Nylon + 13% spandex

**Size:** S - XXL

**Colour:** 

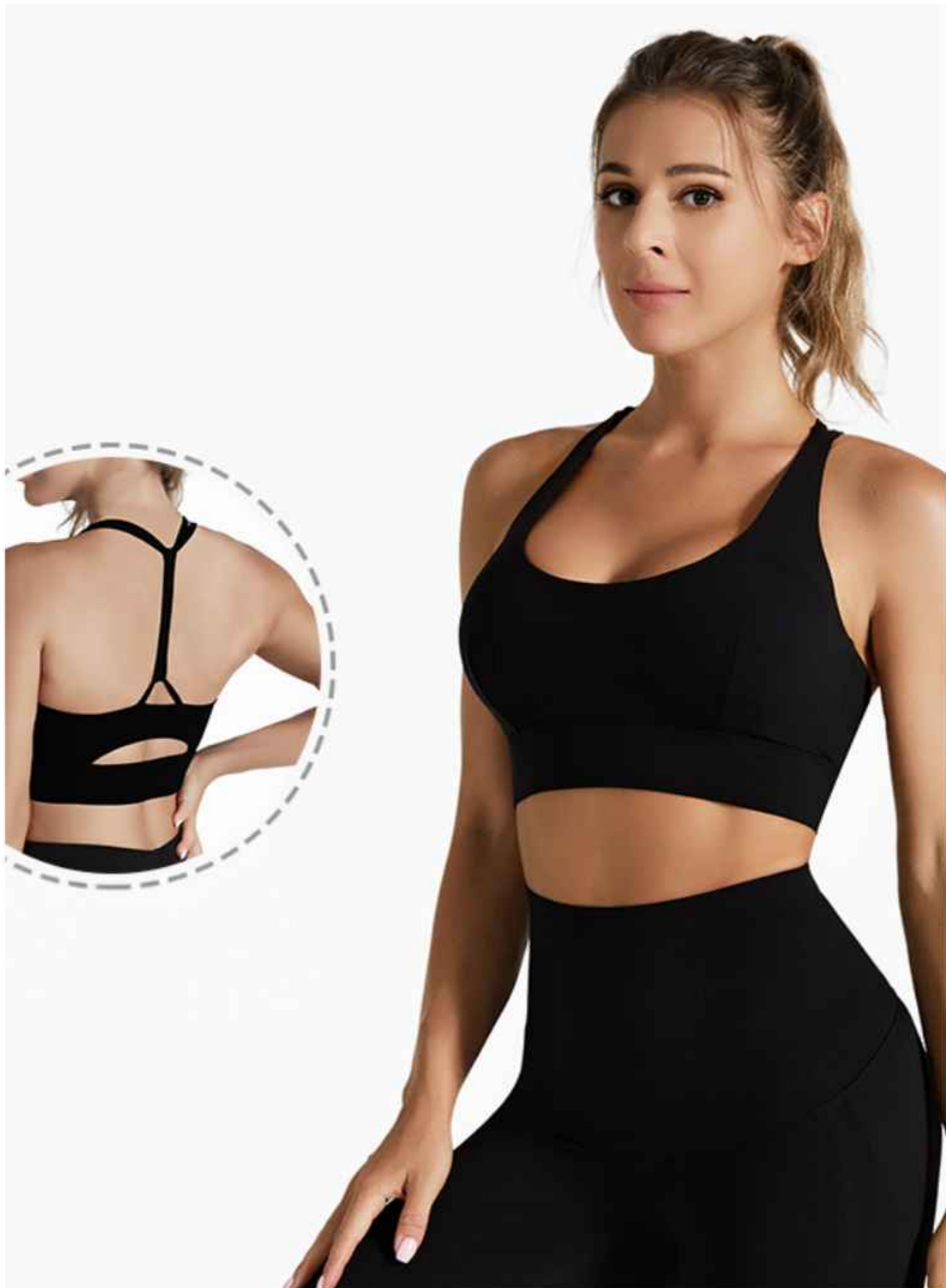
## Style Details:

- Comfortable & Breathable
- Wide Waistband for Shaping and Tummy Control

SIZE	S	M	L	XL	XXL
1/2 CHEST	11.4	12.2	13	13.8	14.6
1/2 HEM	11	11.8	12.6	13.4	14.2
FRONT LENGTH	13.6	14.2	15	15.8	16.6

All measurements are in inches.





# FSP1962-6

Price: \$ 5.20

Stitching: Cut&sewn

Material: 76% Nylon + 24% spandex

Size: S - XXL

Colour:

## Style Details:

- Beauty Back Design
- Wide Underband Fit

SIZE	S	M	L	XL	XXL
1/2 CHEST	6.6	7	7.4	7.8	8.2
1/2 HEM	5.9	6.3	6.7	7.1	7.5
FRONT LENGTH	12.8	13.4	14	14.6	15.2

All measurements are in inches.



# BX824

**Price:** \$ 5.80

**Stitching:** Cut&sewn

**Material:** 86% Nylon + 14% spandex

**Size:** S - XXL

**Colour:**

**Style Details:**

- Crisscross Back Style
- Delicate Texture, Excellent Breathability

SIZE	S	M	L	XL	XXL
1/2 CHEST	13	13.8	14.6	15.4	16.2
1/2 HEM	11.8	12.6	13.4	14.2	15
FRONT LENGTH	15	15.4	15.8	16.2	16.6

All measurements are in inches.





# BSYDWX

**Price:** \$ 4.20

**Stitching:** Cut&sewn

**Material:** 86% Nylon + 14% spandex

**Size:** S - XXL

**Colour:**

**Style Details:**

- Open-Shoulder Beauty Back Design
- Palm-Shaped Cup Padding

SIZE	S	M	L	XL	XXL
1/2 CHEST	12.6	13.4	14.2	15	15.8
1/2 HEM	11	11.8	12.6	13.4	14.2
FRONT LENGTH	10.4	10.8	11.2	11.6	12

All measurements are in inches.





# WX155

**Price:** \$ 4.70

**Stitching:** Seamless

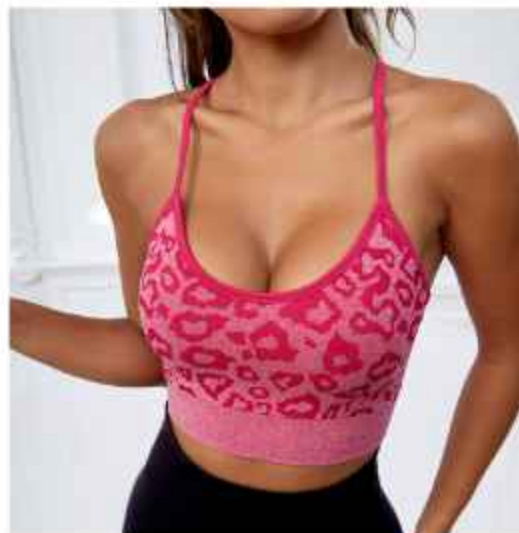
**Material:** 65% Nylon +25%polyester+ 10% spandex

**Size:** S - L

**Colour:**  

**Style Details:**

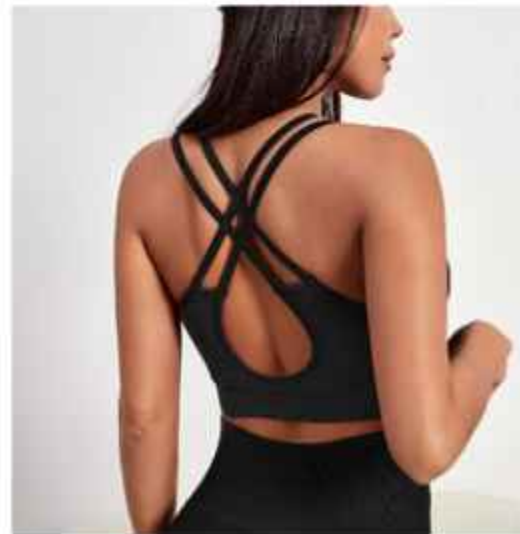
- Unique Floral Patterns
- Cross-back thin straps



SIZE	S	M	L
1/2 CHEST	13.8	14.6	15.4
1/2 HEM	11.4	12.2	13.0
FRONT LENGTH	11.6	12.4	13.2

All measurements are in inches.





# WX224

**Price:** \$ 4.20

**Stitching:** Seamless

**Material:** 90% Nylon + 10% spandex

**Size:** S - L

**Colour:**   

### Style Details:

- Adjustable fixed shoulder straps
- High Sweat Absorption Performance

SIZE	S	M	L
1/2 CHEST	13.8	14.6	15.4
1/2 HEM	11.4	12.2	13.0
FRONT LENGTH	9.7	10.2	10.8

All measurements are in inches.





# WX510

**Price:** \$ 4.00

**Stitching:** Seamless

**Material:** 90% Nylon + 10% spandex

**Size:** S - L

**Colour:** 

### Style Details:

- High Elasticity
- Enhanced Moisture-Wicking and Sweat-Absorption

SIZE	S	M	L
1/2 CHEST	13.0	13.8	14.6
1/2 HEM	11.4	12.2	13.0
FRONT LENGTH	9.1	9.7	10.2

All measurements are in inches.





# WX522

Price: \$ 5.20

Stitching: Seamless

Material: 90% Nylon + 10% spandex

Size: S - L

Colour: ●

## Style Details:

- Front Zipper Design
- Cross-back Straps

SIZE	S	M	L
1/2 CHEST	13.4	14.2	15.0
1/2 HEM	11.4	12.2	13.0
FRONT LENGTH	13.0	13.6	14.2

All measurements are in inches.



# WX526

Price: \$ 4.30

Stitching: Seamless

Material: 90% Nylon + 10% spandex

Size: S - L

Colour: ●

## Style Details:

- Seamless design for ultimate comfort
- Breathable and moisture-wicking fabric

SIZE	S	M	L
1/2 CHEST	13.8	14.6	15.4
1/2 HEM	12.2	13.0	13.8
FRONT LENGTH	12.4	13.0	13.6

All measurements are in inches.





# WX497

**Price:** \$ 4.00

**Stitching:** Seamless

**Material:** 90% Nylon + 10% spandex

**Size:** S - L

**Colour:** ●

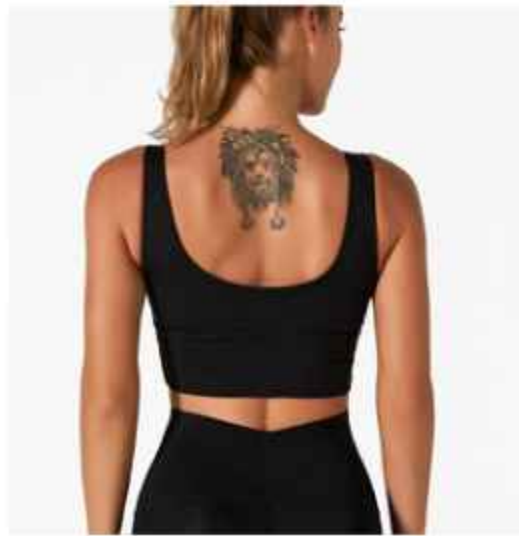
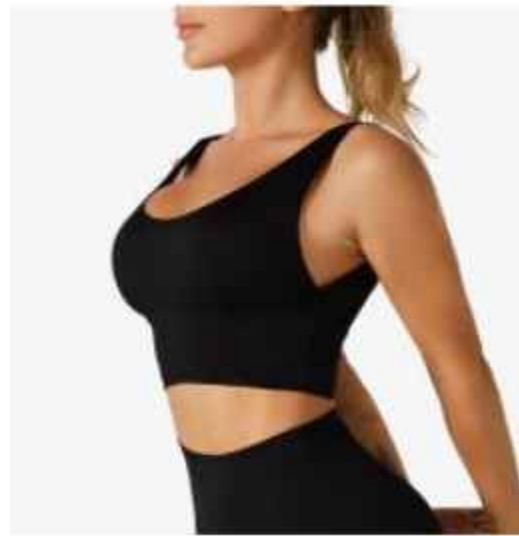
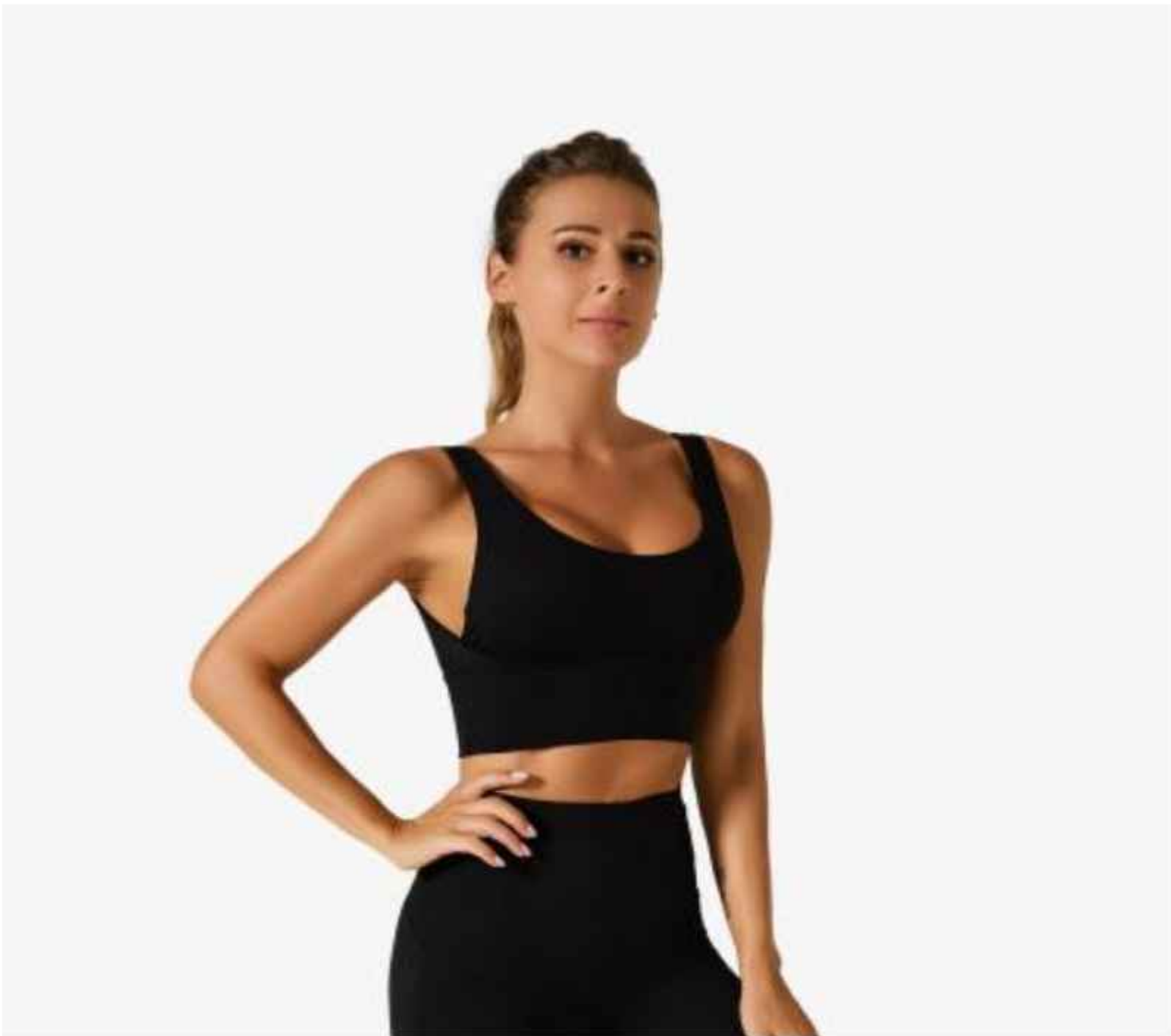
**Style Details:**

- Color-Contrast Double Shoulder Strap Design
- Seamless One-Piece Fabric

SIZE	S	M	L
1/2 CHEST	13.4	14.2	15.0
1/2 HEM	11.4	12.2	15.0
FRONT LENGTH	8.9	9.5	10.0

All measurements are in inches.





# FSP1966-8

**Price:** \$ 5.40

**Stitching:** Cut&sewn

**Material:** 76% Nylon + 24% spandex

**Weight:** 220g

**Size:** S - XXL

**Colour:**

### Style Details:

- U-Back Design
- 360° Full Coverage

SIZE	S	M	L	XL	XXL
1/2 CHEST	11.8	12.6	13.4	14.2	15
1/2 HEM	11.4	12.2	13	13.8	14.6
FRONT LENGTH	11.8	12.4	13	13.6	14.2

All measurements are in inches.





# JYMB005

**Price:** \$ 4.00

**Stitching:** Cut&sewn

**Material:** 87% Nylon + 13% spandex

**Size:** S - XXL

**Colour:**   

**Style Details:**

- 3D Molding Cups
- Sexy Back Design



SIZE	S	M	L	XL	XXL
1/2 CHEST	13.4	14.2	15	15.8	16.6
1/2 HEM	11.4	12.2	13	13.8	14.6
FRONT LENGTH	15.2	15.6	16	16.4	16.8

All measurements are in inches.



# JYMN003

**Price:** \$ 3.80

**Stitching:** Cut&sewn

**Material:** 87% Nylon + 13% spandex

**Weight:** 220g

**Size:** S - XXL

**Colour:** 

**Style Details:**

- Color-block U-neck Design
- Elastic Comfort Fit



SIZE	S	M	L	XL	XXL
1/2 CHEST	13	13.8	14.6	15.4	16.2
1/2 HEM	11	11.8	12.6	13.4	14.2
FRONT LENGTH	12.2	12.6	13	13.4	13.8

All measurements are in inches.





# MTJWXX

**Price:** \$ 4.80

**Stitching:** Cut&sewn

**Material:** 76% Nylon + 24% spandex

**Size:** S - XXL

**Colour:**

**Style Details:**

- Lightweight Barely-There Feel
- Hook-Free Thin Straps

SIZE	S	M	L	XL	XXL
<b>1/2 CHEST</b>	14.2-15.6	14.9-16.3	15.6-17	16.5-17.6	17-18.3
<b>1/2 HEM</b>	12.6-14.2	13.3-14.9	14-15.6	14.7-16.5	15.4-16.9

All measurements are in inches.





# MTKWX

**Price:** \$ 3.40

**Stitching:** Cut&sewn

**Material:** 87% Nylon + 13% spandex

**Size:** S - XXL

**Colour:** 

- Style Details:**
- Wide Straps for Extra Support
  - 3D Shaping for a Defined Bust

SIZE	S	M	L	XL	XXL
1/2 CHEST	12.6	13.4	14.2	15	15.8
1/2 HEM	10.6	11.4	12.2	13	13.8
FRONT LENGTH	12.6	13	13.4	13.8	14.2

All measurements are in inches.





# MTWXP01

**Price:** \$ 3.80

**Stitching:** Cut&sewn

**Material:** 87% Nylon + 13% spandex

**Size:** S - XXL

**Colour:** 

**Style Details:**

- Wide Underband
- Enhanced Shock-Absorption

SIZE	S	M	L	XL	XXL
1/2 CHEST	11.8	12.6	13.4	14.2	15
1/2 HEM	11	11.8	12.6	13.4	14.2
FRONT LENGTH	11.4	11.8	12.2	12.6	13

All measurements are in inches.





# MTWXW01

**Price:** \$ 3.80

**Stitching:** Cut&sewn

**Material:** 87% Nylon + 13% spandex

**Weight:** 220g

**Size:** S - XXL

**Colour:** 

### Style Details:

- Mesh Fabric
- Enhanced Moisture-Wicking Performance

SIZE	S	M	L	XL	XXL
1/2 CHEST	12.2	13	13.8	14.6	15.4
1/2 HEM	11.8	12.6	13.4	14.2	15
FRONT LENGTH	10.6	11	11.4	11.8	12.2

All measurements are in inches.





# MTWXW02

**Price:** \$ 4.60

**Stitching:** Cut&sewn

**Material:** 87% Nylon + 13% spandex

**Size:** S - XXL

**Colour:**

**Style Details:**

- Butterfly Mesh Back
- Shrink and Shape-Resistant Fabri

SIZE	S	M	L	XL	XXL
1/2 CHEST	13	13.8	14.5	15.3	15.3
1/2 HEM	12.2	13	13.8	14.5	14.5
FRONT LENGTH	11.4	11.8	12.2	12.6	13

All measurements are in inches.





# MTXWX60

**Price:** \$ 3.40

**Stitching:** Cut&sewn

**Material:** 87% Nylon + 13% spandex

**Size:** S - XXL

**Colour:**

**Style Details:**

- Dual Straps for Reduced Pressure
- Shock-Absorbing Back Design

SIZE	S	M	L	XL	XXL
1/2 CHEST	13	13.8	14.6	15.4	16.2
1/2 HEM	11	11.8	12.6	13.4	14.2
FRONT LENGTH	13.8	14.2	14.6	15	15.4

All measurements are in inches.





# WX819

**Price:** \$ 5.70

**Stitching:** Cut&sewn

**Material:** 86% Nylon + 14% spandex

**Weight:** 220g

**Size:** S - XXL

**Colour:**

### Style Details:

- Cooling & Breathable Fabric
- Double-Strap Beauty Back Design

SIZE	S	M	L	XL	XXL
1/2 CHEST	13.4	14.2	15	15.8	16.6
1/2 HEM	11	11.8	12.6	13.4	14.2
FRONT LENGTH	12.2	12.6	13	13.8	14.2

All measurements are in inches.





# WX1249

**Price:** \$ 7.50

**Stitching:** Cut&sewn

**Material:** 80% Nylon + 20% spandex

**Size:** S - XL

**Colour:**

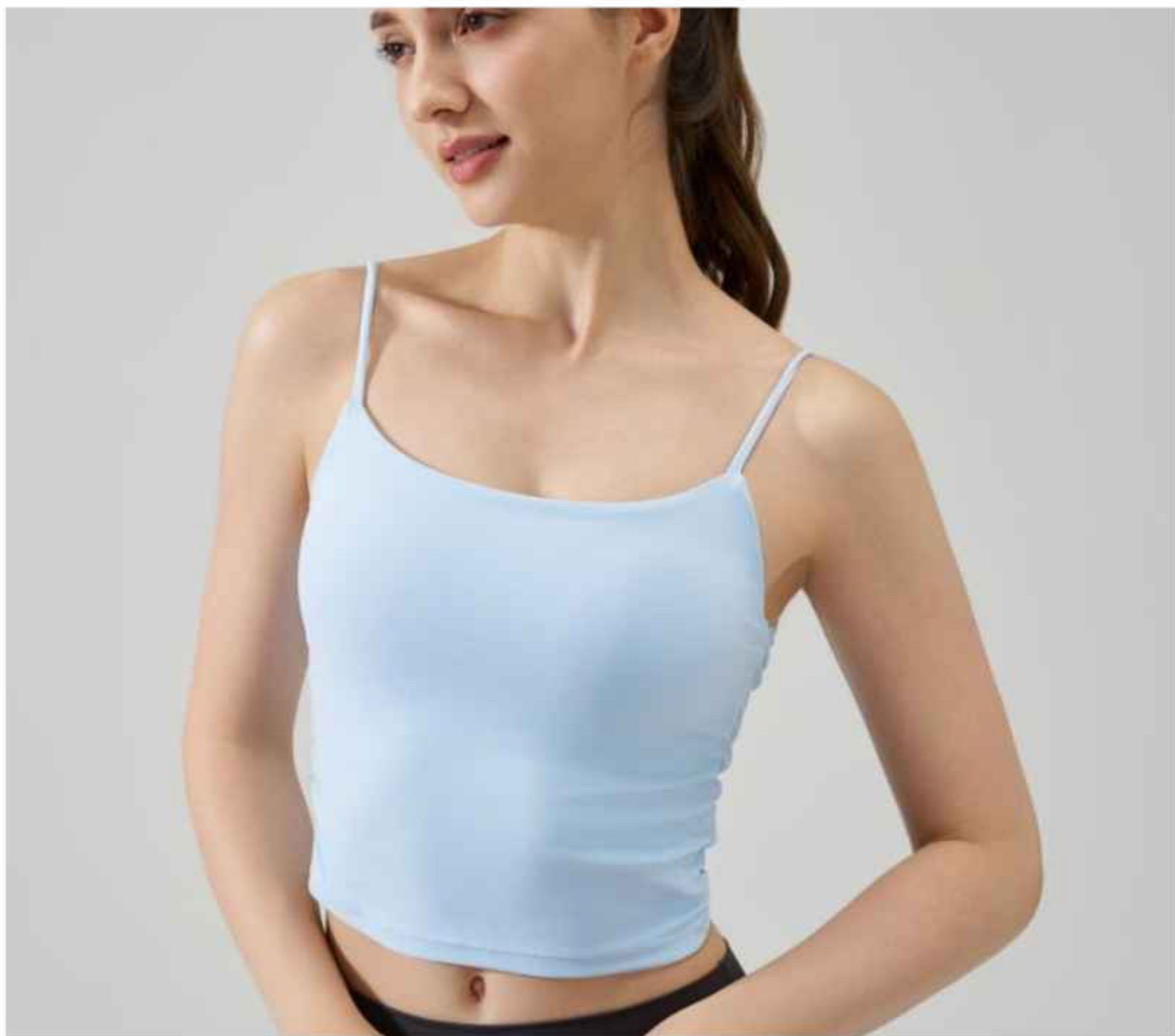
**Style Details:**

- Moisture-wicking and breathable fabric
- Firm support with no shifting

SIZE	S	M	L	XL
1/2 CHEST	13	14	15	16
1/2 HEM	11.8	12.8	13.8	14.8
FRONT LENGTH	12.2	12.6	13	13.4

All measurements are in inches.





# WX1252

**Price:** \$ 6.70

**Stitching:** Cut&sewn

**Material:** 80% Nylon + 20% spandex

**Weight:** 220g

**Size:** S - L

**Colour:**

### Style Details:

- Distinctive Pleated Design
- Anti-Pilling Fabric for Long-Lasting Smoothness

SIZE	S	M	L
1/2 CHEST	13.4	14.1	14.9
1/2 HEM	12.6	13.4	14.1
FRONT LENGTH	14.9	15.3	15.7

All measurements are in inches.





# WX1518

**Price:** \$ 8.60

**Stitching:** Cut&sewn

**Material:** 80% Nylon + 20% spandex

**Weight:** 220g

**Size:** S - XL

**Colour:**

- Style Details:**
- Moisture-permeable and fast-drying textile
  - Wide Underband Support

SIZE	S	M	L	XL
<b>1/2 CHEST</b>	12.6	14.0	14.9	15.9
<b>1/2 HEM</b>	11	12	13	14
<b>FRONT LENGTH</b>	13.6	14	14.3	14.7

All measurements are in inches.





# WX1569

**Price:** \$ 7.30

**Stitching:** Cut&sewn

**Material:** 80% Nylon + 20% spandex

**Weight:** 195g

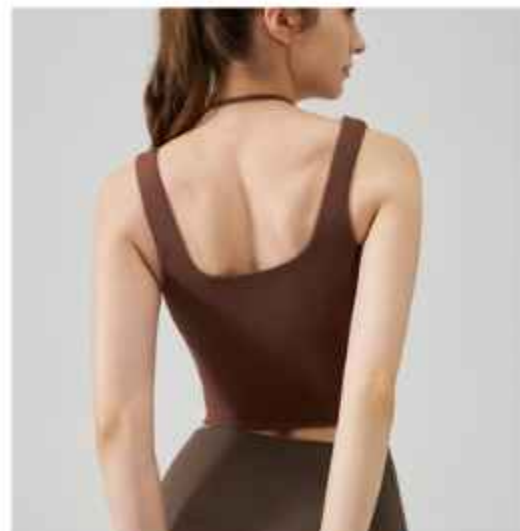
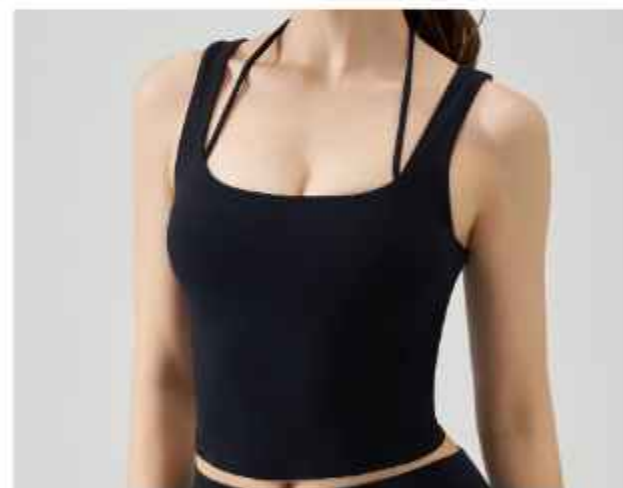
**Size:** S - XL

**Colour:**

- Style Details:**
- The U-neckline
  - Breathable integrated fixed padding

SIZE	S	M	L	XL
<b>1/2 CHEST</b>	13.5	14.2	15.4	16.4
<b>1/2 HEM</b>	11.8	12.8	13.8	14.8
<b>FRONT LENGTH</b>	12.4	12.8	13.2	13.6

All measurements are in inches.



# WX41007

**Price:** \$ 8.40

**Stitching:** Cut&sewn

**Material:** 80% Nylon + 20% spandex

**Weight:** 190g

**Size:** S - XL

**Colour:**

### Style Details:

- Removable Cup Pads
- Mesh Lining for Breathability

SIZE	S	M	L	XL
1/2 CHEST	13.4	14.3	15.3	16.3
1/2 HEM	12.6	13.6	14.5	15.5
FRONT LENGTH	15.3	15.7	16.3	16.9

All measurements are in inches.





# JYMA004

Price: \$ 4.40

Stitching: Cut&sewn

Material: 87% Nylon + 13% spandex

Size: S - XXL

Colour:

### Style Details:

- Pressure-Relieving & Elegant Back Design
- Firm Support

SIZE	S	M	L	XL	XXL
1/2 CHEST	13.4	14.2	15	15.8	16.6
FRONT LENGTH	13	13.4	13.8	14.2	14.6

All measurements are in inches.



# WX1411

**Price:** \$ 6.50

**Stitching:** Cut&sewn

**Material:** 80% Nylon + 20% spandex

**Size:** S - XL

**Colour:** 

**Style Details:**

- Sexy back details
- Push-Up Technology

SIZE	S	M	L	XL
<b>1/2 CHEST</b>	12.2	13.2	14.1	15.1
<b>1/2 HEM</b>	11.2	12.2	13.2	14.1
<b>FRONT LENGTH</b>	11.0	11.4	11.8	12.2

All measurements are in inches.





# MTHDWX02

**Price:** \$ 4.00

**Stitching:** Cut&sewn

**Material:** 87% Nylon + 13% spandex

**Size:** S - XXL

**Colour:**

## Style Details:

- Comfortable & Breathable
- Wide Waistband for Shaping and Tummy Control

SIZE	S	M	L	XL	XXL
1/2 CHEST	11.4	12.2	13	13.8	14.6
1/2 HEM	11	11.8	12.6	13.4	14.2
FRONT LENGTH	13.6	14.2	15	15.8	16.6

All measurements are in inches.





# FSP1962-6

Price: \$ 5.20

Stitching: Cut&sewn

Material: 76% Nylon + 24% spandex

Size: S - XXL

Colour:

## Style Details:

- Beauty Back Design
- Wide Underband Fit

SIZE	S	M	L	XL	XXL
1/2 CHEST	6.6	7	7.4	7.8	8.2
1/2 HEM	5.9	6.3	6.7	7.1	7.5
FRONT LENGTH	12.8	13.4	14	14.6	15.2

All measurements are in inches.





# BX824

**Price:** \$ 5.80

**Stitching:** Cut&sewn

**Material:** 86% Nylon + 14% spandex

**Size:** S - XXL

**Colour:** 

**Style Details:**

- Crisscross Back Style
- Delicate Texture, Excellent Breathability

SIZE	S	M	L	XL	XXL
1/2 CHEST	13	13.8	14.6	15.4	16.2
1/2 HEM	11.8	12.6	13.4	14.2	15
FRONT LENGTH	15	15.4	15.8	16.2	16.6

All measurements are in inches.





# BSYDWX

**Price:** \$ 4.20

**Stitching:** Cut&sewn

**Material:** 86% Nylon + 14% spandex

**Size:** S - XXL

**Colour:**

**Style Details:**

- Open-Shoulder Beauty Back Design
- Palm-Shaped Cup Padding

SIZE	S	M	L	XL	XXL
1/2 CHEST	12.6	13.4	14.2	15	15.8
1/2 HEM	11	11.8	12.6	13.4	14.2
FRONT LENGTH	10.4	10.8	11.2	11.6	12

All measurements are in inches.





# WX155

**Price:** \$ 4.70

**Stitching:** Seamless

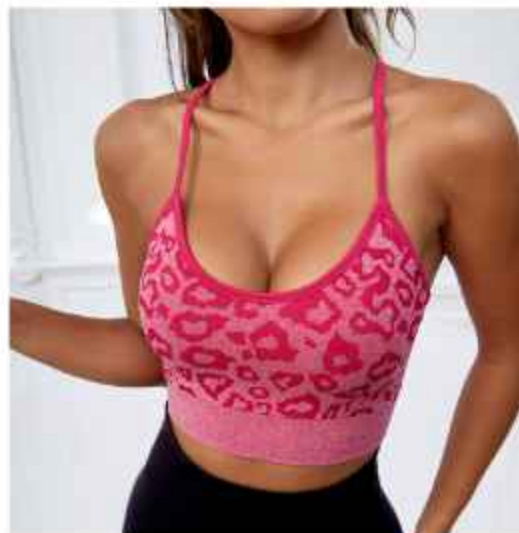
**Material:** 65% Nylon +25%polyester+ 10% spandex

**Size:** S - L

**Colour:**  

**Style Details:**

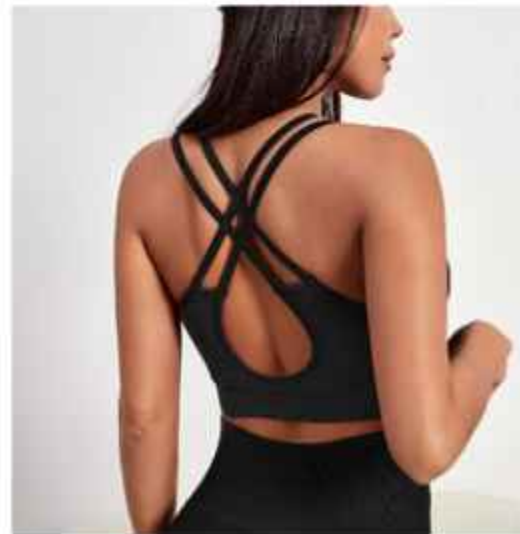
- Unique Floral Patterns
- Cross-back thin straps



SIZE	S	M	L
1/2 CHEST	13.8	14.6	15.4
1/2 HEM	11.4	12.2	13.0
FRONT LENGTH	11.6	12.4	13.2

All measurements are in inches.





# WX224

**Price:** \$ 4.20

**Stitching:** Seamless

**Material:** 90% Nylon + 10% spandex

**Size:** S - L

**Colour:**   

### Style Details:

- Adjustable fixed shoulder straps
- High Sweat Absorption Performance

SIZE	S	M	L
1/2 CHEST	13.8	14.6	15.4
1/2 HEM	11.4	12.2	13.0
FRONT LENGTH	9.7	10.2	10.8

All measurements are in inches.





# WX510

Price: **\$ 4.00**

Stitching: Seamless

Material: 90% Nylon + 10% spandex

Size: S - L

Colour: 

## Style Details:

- High Elasticity
- Enhanced Moisture-Wicking and Sweat-Absorption

SIZE	S	M	L
1/2 CHEST	13.0	13.8	14.6
1/2 HEM	11.4	12.2	13.0
FRONT LENGTH	9.1	9.7	10.2

All measurements are in inches.





# WX522

Price: \$ 5.20

Stitching: Seamless

Material: 90% Nylon + 10% spandex

Size: S - L

Colour: ●

## Style Details:

- Front Zipper Design
- Cross-back Straps

SIZE	S	M	L
1/2 CHEST	13.4	14.2	15.0
1/2 HEM	11.4	12.2	13.0
FRONT LENGTH	13.0	13.6	14.2

All measurements are in inches.





# WX526

Price: \$ 4.30

Stitching: Seamless

Material: 90% Nylon + 10% spandex

Size: S - L

Colour: ●

## Style Details:

- Seamless design for ultimate comfort
- Breathable and moisture-wicking fabric

SIZE	S	M	L
1/2 CHEST	13.8	14.6	15.4
1/2 HEM	12.2	13.0	13.8
FRONT LENGTH	12.4	13.0	13.6

All measurements are in inches.





# WX497

**Price:** \$ 4.00

**Stitching:** Seamless

**Material:** 90% Nylon + 10% spandex

**Size:** S - L

**Colour:** ●

**Style Details:**

- Color-Contrast Double Shoulder Strap Design
- Seamless One-Piece Fabric

SIZE	S	M	L
1/2 CHEST	13.4	14.2	15.0
1/2 HEM	11.4	12.2	15.0
FRONT LENGTH	8.9	9.5	10.0

All measurements are in inches.





# SET




# 004-9KCX

**Price:** \$10.90

**Stitching:** Seamless

**Material:** 90%Polyamide+10%Elastane

**Size:** XS-S-M-L

**Colour:** 

### Style Details:

- Suitable for all seasons
- versatile for various occasions

SIZE	XS	S	M	L
LENGTH	13	13.8	14.6	15.4
1/2 CHEST	12.8	13.8	14.8	15.8
1/2 HEM	11.4	12.2	13	13.8
SLEEVE LENGTH	23.6	24	24.4	24.8
OUTSEAM	31.9	32.7	33.5	34.3
1/2 WAISTLINE	10.6	11.4	12.2	13
1/2 HIPLINE	12.4	13.2	14	14.8

All measurements are in inches.





# 072-WX9K

**Price:** **\$10.30**

**Stitching:** Seamless

**Material:** Polyamide65%+Polyester25%+Elastane10%

**Size:** XS-S-M-L

**Colour:**

### Style Details:

- Engineered for moisture management
- Featuring a lightweight and breathable design.

SIZE	XS	S	M	L
LENGTH	11	11.8	12.6	13.4
1/2 CHEST	12.6	13.6	14.6	15.6
1/2 HEM	10.8	11.8	12.8	13.8
OUTSEAM	31.1	32.1	33.1	34.1
1/2 WAISTLINE	10.6	11.4	12.2	13
1/2 HIPLINE	13.4	14.4	15.4	16.4

All measurements are in inches.





# 072-CX9K

**Price:** \$11.90

**Stitching:** Seamless

**Material:** Polyamide65%+Polyester25%+Elastane10%

**Size:** S-M-L

**Colour:**

### Style Details:

- High elasticity, breathable
- moisture-wicking, and gentle on the skin

SIZE	S	M	L
LENGTH	13.4	13.8	14.4
1/2 CHEST	13.4	14.2	15.4
1/2 HEM	11.8	12.6	18.1
SLEEVE LENGTH	22.9	23.2	23.7
OUTSEAN	32.1	33.1	34.1
1/2 WAISTLINE	11.4	12.2	13.4
1/2 HIPLINE	14.4	15.4	16.4

All measurements are in inches.





# 081-WX9K

**Price:** \$8.90

**Stitching:** Seamless

**Material:** 90%Polyamide+10%Elastane

**Size:** S-M-L

**Colour:**

## Style Details:

- Perfect for running and fitness
- moisture-wicking, sweat-absorbing, and quick-drying

SIZE	S	M	L
LENGTH	12.2	13	13.8
1/2 CHEST	13.4	14.2	15
1/2 HEM	11	11.8	12.6
OUTSEAN	33.9	34.3	34.9
1/2 WAISTLINE	12.2	13	14.2
1/2 HIPLINE	15	15.8	16.9

All measurements are in inches.





# 412-WXDK

**Price:** **\$6.20**

**Stitching:** Seamless

**Material:** 90%Polyamide+10%Elastane

**Size:** S-M-L

**Colour:** ●

### Style Details:

- Maximize Performance, Minimize Bulk
- High-Intensity Running in Slim-Fit Style

SIZE	S	M	L
LENGTH	12.4	13.0	13.6
1/2 CHEST	13.4	14.2	15.0
1/2 HEM	11.0	11.8	12.6
OUTSEAM	11.8	12.2	12.6
1/2 WAISTLINE	11.4	12.2	13.0
1/2 HIPLINE	14.2	15.0	15.8

All measurements are in inches.





# 418-DXDK

**Price:** **\$7.20**

**Stitching:** Seamless

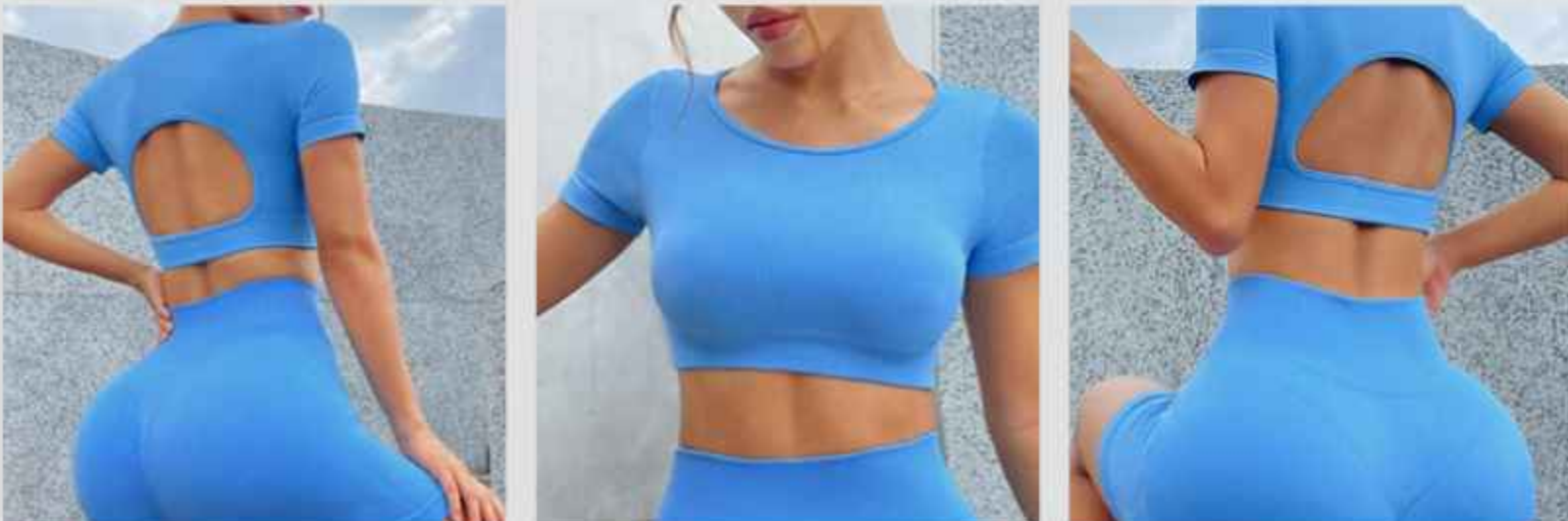
**Material:** 90%Polyamide+10%Elastane

**Size:** S-M-L

**Colour:**

**Style Details:**

- Tight, Quick-Dry Yoga Outfits
- Ideal for Intense Sessions



SIZE	S	M	L
LENGTH	12	12.6	13.2
1/2 CHEST	12.6	13.4	14.2
1/2 HEM	11.8	12.6	13.4
SLEEVE LENGTH	5.9	6.1	6.3
OUTSEAN	14.2	14.6	15
1/2 WAISTLINE	11	11.8	12.6
1/2 HIPLINE	13	13.8	14.6

All measurements are in inches.






# 426-CXDK

**Price:** **\$11.70**

**Stitching:** Seamless

**Material:** 90%Polyamide+10%Elastane

**Size:** S-M-L

**Colour:** 

### Style Details:

- Body-Hugging Yoga Apparel
- Spring/Summer Essentials

SIZE	S	M	L
LENGTH	12.4	13	13.6
1/2 CHEST	13.4	14.2	15
1/2 HEM	11	11.8	12.6
SLEEVE LENGTH	28	28.6	29.2
OUTSEAM	12.6	13	13.4
1/2 WAISTLINE	11	11.8	12.6
1/2 HIPLINE	14.2	15	15.8

All measurements are in inches.






# 438-WX9K

**Price:** **\$8.30**

**Stitching:** Seamless

**Material:** 90%Polyamide+10%Elastane

**Size:** S-M-L

**Colour:** 

## Style Details:

- Designed for Spring and Summer
- Sleek Yoga Apparel

SIZE	S	M	L
LENGTH	12.4	13	13.6
1/2 CHEST	12.6	13.4	14.2
1/2 HEM	11.4	12.2	13
OUTSEAM	30.3	31.1	31.9
1/2 WAISTLINE	11.4	12.2	13
1/2 HIPLINE	13.4	14.2	15

All measurements are in inches.





# 448-CX9K

**Price:** **\$8.70**

**Stitching:** Seamless

**Material:** 90%Polyamide+10%Elastane

**Size:** S-M-L

**Colour:** ●

### Style Details:

- "Sexy, High-Stretch Fitness Sets
- Perfect for Fall/Winter Workouts

SIZE	S	M	L
LENGTH	15	15.6	16.2
1/2 CHEST	13.4	14.2	15
1/2 HEM	11.4	12.2	13
SLEEVE LENGTH	27.2	27.8	28.4
OUTSEAM	30.7	31.5	32.3
1/2 WAISTLINE	11.4	12.2	13
1/2 HIPLINE	14.2	15	15.8

All measurements are in inches.






# 454-CX9K

**Price:** **\$9.60**

**Stitching:** Seamless

**Material:** Polyamide65%+Polyester25%+Elastane10%

**Size:** S-M-L

**Colour:** 

**Style Details:**

- Trendy Seamless Gym Gear
- Designed for Fall and Winter

SIZE	S	M	L
LENGTH	12.6	13.2	13.8
1/2 CHEST	13	13.8	14.6
1/2 HEM	11	11.8	12.6
SLEEVE LENGTH	25.6	26.2	26.8
OUTSEAM	31.1	31.9	32.7
1/2 WAISTLINE	11.4	12.2	13
1/2 HIPLINE	12.6	13.4	14.2

All measurements are in inches.





# 460-WX9K

**Price:** **\$8.50**

**Stitching:** Seamless

**Material:** 90%Polyamide+10%Elastane

**Size:** S-M-L

**Colour:** ●

## Style Details:

- Seamless Activewear
- Ideal for Running and Gym in Fall/Winter

SIZE	S	M	L
LENGTH	12.2	12.6	13
1/2 CHEST	13.8	14.6	15.4
1/2 HEM	11.4	12.2	13
OUTSEAM	30.3	31.1	31.9
1/2 WAISTLINE	11.4	12.2	13
1/2 HIPLINE	14.2	15	15.8

All measurements are in inches.






# 490-CX9K

**Price:** **\$10.60**

**Stitching:** Seamless

**Material:** 90%Polyamide+10%Elastane

**Size:** S-M-L

**Colour:** 

## Style Details:

- Crewneck Fitness Sets
- Designed for Gym, Running, and Yoga

SIZE	S	M	L
LENGTH	14.2	14.8	15.4
1/2 CHEST	13	13.8	14.6
SLEEVE LENGTH	26.4	27	27.7
OUTSEAM	32.5	33.3	34.1
1/2 WAISTLINE	11.4	12.2	13
1/2 HIPLINE	13.8	14.6	15.4

All measurements are in inches.








# 506-CX9K

**Price:** **\$10.40**

**Stitching:** Seamless

**Material:** 90%Polyamide+10%Elastane

**Size:** S-M-L

**Colour:**   

### Style Details:

- Form-Fitting Fitness Gear
- Stylish & Functional for Cold Weather

SIZE	S	M	L
LENGTH	13.6	14.2	14.8
1/2 CHEST	13.4	14.2	15
1/2 HEM	11.4	11.7	12
SLEEVE LENGTH	24.8	25.5	26.1
OUTSEAM	29.2	29.9	30.7
1/2 WAISTLINE	11.4	12.2	13
1/2 HIPLINE	13.6	14.4	15.2

All measurements are in inches.





# 512-CX9K

**Price:** **\$10.20**

**Stitching:** Seamless

**Material:** 90%Polyamide+10%Elastane

**Size:** S-M-L

**Colour:** ●

## Style Details:

- High-Stretch, Breathable Activewear
- Perfect for Fall/Winter Fitness

SIZE	S	M	L
LENGTH	13.2	13.8	14.4
1/2 CHEST	12.6	13.4	14.2
1/2 HEM	11.8	12.6	13.4
SLEEVE LENGTH	25.8	26.4	27.1
OUTSEAM	30.7	31.5	32.3
1/2 WAISTLINE	11.8	12.6	13.4
1/2 HIPLINE	13.4	14.2	15

All measurements are in inches.






# 516-CX9K

**Price:** **\$9.60**

**Stitching:** Seamless

**Material:** 90%Polyamide+10%Elastane

**Size:** S-M-L

**Colour:** 

### Style Details:

- Breathable, Form-Fitting Activewear
- Stylish & Comfortable for Cold Days

SIZE	S	M	L
LENGTH	13.4	14	14.6
1/2 CHEST	12.8	13.6	14.4
1/2 HEM	11.4	12.2	13
SLEEVE LENGTH	26.8	27.4	28.1
OUTSEAM	31.5	32.3	33.1
1/2 WAISTLINE	11.2	12	12.8
1/2 HIPLINE	13.8	14.6	15.4

All measurements are in inches.





# CONTACT US

*We look forward to working  
with you*

## OFFICE



11A 508-509, Phase I, International Land  
Port E-commerce Mall, Chengxi Street,  
Yiwu City, Zhejiang Province



Brittany: +86 18657950860

Hannah: +86 15268654602

Yuka: +86 15267393750

Alba: +15906799820 (Spanish service)



<https://www.cnyogaclothing.com/>



Yiwu Ziyang Import & Export Co., Ltd



ziyang\_activewear\_factory

